

# HI-DRI ACRES UNIT 1

SECTION 15, TOWNSHIP 5 SOUTH, RANGE 16 EAST  
COLUMBIA COUNTY, FLORIDA

Plat Book 4  
Page 6

### DESCRIPTION:

The Northeast 1/4 of the Northwest 1/4 and that part of the Northwest 1/4 of the Northeast 1/4 lying West of the Atlantic Coastline Railroad Right-of-Way, and also the North 35 feet of the Southeast 1/4 of the Northwest 1/4 and the North 35 feet of the Southwest 1/4 of the Northeast 1/4 lying West of the Atlantic Coastline Railroad Right-of-Way, all in Section 15, Township 5 South, Range 16 East, Columbia County, Florida.

### LEGEND:

1. 4" x 4" Concrete P.R.M. with Brass Cap, stamped L.L. LEE & ASSOCIATES with Surveyor's Registration Number and Date and P.R.M. Number.
2. 4" x 4" Concrete Monument with Brass Cap, Stamped L.L. LEE & ASSOCIATES, INC., with Surveyor's Registration Number and Date and Lot Number.
3. Permanent Control Point 4x4" Concrete Monument with Cap stamped P.C.P. with Surveyor's Registration Number and P.C.P. Number.
4. Bearings based on prior survey in this area. See Plat B-15-34, dated 2-15-73.
5. Boundry based on prior surveys of record.

### CERTIFICATE OF CLERK:

I, File No. \_\_\_\_\_  
I HEREBY that I have examined the foregoing plat and find that it complies in form with Chapter 177, Florida Statutes, and was filed for record this 21<sup>st</sup> day of SEPT. A.D. 1973 in Plat Book 4, Page 6 of the Public Records of Columbia County, Florida.  
Clerk of Circuit Court in and for Columbia County, Florida.

APPROVED BY BOARD OF COUNTY COMMISSIONERS, COLUMBIA COUNTY FLORIDA

Signed: \_\_\_\_\_, Chairman  
Attest: \_\_\_\_\_, Clerk  
Date: \_\_\_\_\_

### DEDICATION:

I know all men present that the BOMA FIRMA CORPORATION, a Florida corporation as owners and THE STATE EXCHANGE BANK as mortgagee have caused the lands herein described to be surveyed, laid out, subdivided, and platted to be known as HI-DRI ACRES UNIT 1, and that the streets and roads as shown are hereby dedicated to the public, in witness whereof the said BOMA FIRMA CORPORATION and THE STATE EXCHANGE BANK have caused these present to be signed in its names by its officials and its corporate seals to be affixed.

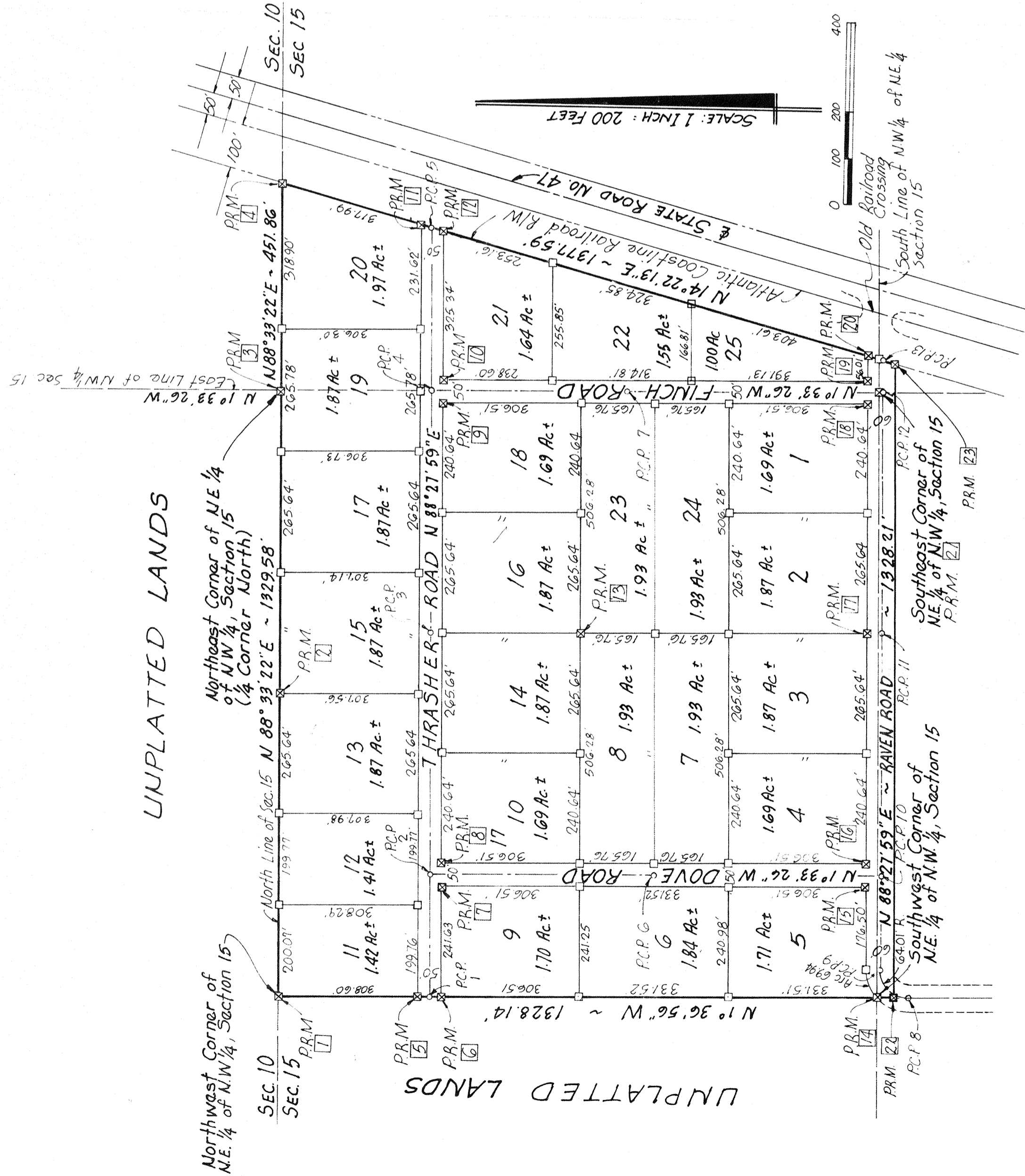
WITNESS: THE STATE EXCHANGE BANK  
By: \_\_\_\_\_, Its VICE PRESIDENT  
Attested: \_\_\_\_\_, Its ASSISTANT CASHIER  
Date: \_\_\_\_\_

WITNESS: BOMA FIRMA CORPORATION, A Florida Corporation  
By: \_\_\_\_\_, Its PRESIDENT  
Attested: \_\_\_\_\_, Its SECRETARY  
Date: \_\_\_\_\_

### ACKNOWLEDGEMENT

I HEREBY CERTIFY on this 21<sup>st</sup> day of September, 1973 before me personally appeared LENVIL H. DICKS and JULIA R. DICKS respectively PRESIDENT and SECRETARY of BOMA FIRMA CORPORATION, a Florida corporation and CLIFFORD L. CURRIE and DONALD A. WILLIAM, individuals and officers described in and who executed the foregoing dedication and severally acknowledged the execution thereof to be their free act and as such officers thereunto duly authorized and that the official seals of said corporations are duly affixed thereto and said dedication is the act and deed of said corporations.  
Witness My hand and official seal at \_\_\_\_\_, state of Florida this 21<sup>st</sup> day of September, 1973.

UNPLATTED LANDS



### SURVEYOR'S CERTIFICATION

I HEREBY CERTIFY that I am a duly authorized Land Surveyor and that a Survey of the lands herein described has been made under my responsible direction and supervision and subdivided as shown on this plat and that Permanent Reference Monuments and Permanent Control Points have been placed according to Chapter 177, Florida Statutes; Plat being a true and correct representation of said Survey.

FILED FOR RECORD THIS  
DAY OF \_\_\_\_\_ A.D. 19\_\_\_\_  
RECORDED IN \_\_\_\_\_ PAGE \_\_\_\_\_  
BOOK \_\_\_\_\_  
W. E. CRUICKSHANK, Clerk of Circuit Court  
Columbia County, Florida  
By \_\_\_\_\_ Deputy Clerk

Signed: \_\_\_\_\_  
LONNIE L. LEE, R.L.S.  
Fla. Reg. Cert. No. 1950  
Date: September 19, 1973

W. E. Cruickshank  
CLERK OF CIRCUIT COURT  
COLUMBIA COUNTY, FLORIDA

1973 SEP 21 AM 3:19  
BOOK 4 PAGE 6

FILE NO. 73-8197

RECORDED