

Donald F. Lee and Associates, Inc.  
 SURVEYORS - ENGINEERS  
 950 South Ridgewood Drive, Lake City, Florida 32055  
 Phone: (904) 755-6166 FAX: (904) 755-6167

**ACKNOWLEDGEMENT**  
 STATE OF FLORIDA  
 COUNTY OF COLUMBIA  
 The foregoing decision was prepared by me or by a duly qualified and licensed surveyor or engineer, and I am a duly qualified and licensed surveyor or engineer, and I am duly sworn to the truth and accuracy of the same.

**ACKNOWLEDGEMENT**  
 STATE OF FLORIDA  
 COUNTY OF COLUMBIA  
 The foregoing decision was prepared by me or by a duly qualified and licensed surveyor or engineer, and I am a duly qualified and licensed surveyor or engineer, and I am duly sworn to the truth and accuracy of the same.

**ACKNOWLEDGEMENT**  
 STATE OF FLORIDA  
 COUNTY OF COLUMBIA  
 The foregoing decision was prepared by me or by a duly qualified and licensed surveyor or engineer, and I am a duly qualified and licensed surveyor or engineer, and I am duly sworn to the truth and accuracy of the same.

**ACKNOWLEDGEMENT**  
 STATE OF FLORIDA  
 COUNTY OF COLUMBIA  
 The foregoing decision was prepared by me or by a duly qualified and licensed surveyor or engineer, and I am a duly qualified and licensed surveyor or engineer, and I am duly sworn to the truth and accuracy of the same.

**ACKNOWLEDGEMENT**  
 STATE OF FLORIDA  
 COUNTY OF COLUMBIA  
 The foregoing decision was prepared by me or by a duly qualified and licensed surveyor or engineer, and I am a duly qualified and licensed surveyor or engineer, and I am duly sworn to the truth and accuracy of the same.

**ACKNOWLEDGEMENT**  
 STATE OF FLORIDA  
 COUNTY OF COLUMBIA  
 The foregoing decision was prepared by me or by a duly qualified and licensed surveyor or engineer, and I am a duly qualified and licensed surveyor or engineer, and I am duly sworn to the truth and accuracy of the same.

**ACKNOWLEDGEMENT**  
 STATE OF FLORIDA  
 COUNTY OF COLUMBIA  
 The foregoing decision was prepared by me or by a duly qualified and licensed surveyor or engineer, and I am a duly qualified and licensed surveyor or engineer, and I am duly sworn to the truth and accuracy of the same.

**ACKNOWLEDGEMENT**  
 STATE OF FLORIDA  
 COUNTY OF COLUMBIA  
 The foregoing decision was prepared by me or by a duly qualified and licensed surveyor or engineer, and I am a duly qualified and licensed surveyor or engineer, and I am duly sworn to the truth and accuracy of the same.

**ACKNOWLEDGEMENT**  
 STATE OF FLORIDA  
 COUNTY OF COLUMBIA  
 The foregoing decision was prepared by me or by a duly qualified and licensed surveyor or engineer, and I am a duly qualified and licensed surveyor or engineer, and I am duly sworn to the truth and accuracy of the same.

**ACKNOWLEDGEMENT**  
 STATE OF FLORIDA  
 COUNTY OF COLUMBIA  
 The foregoing decision was prepared by me or by a duly qualified and licensed surveyor or engineer, and I am a duly qualified and licensed surveyor or engineer, and I am duly sworn to the truth and accuracy of the same.

**ACKNOWLEDGEMENT**  
 STATE OF FLORIDA  
 COUNTY OF COLUMBIA  
 The foregoing decision was prepared by me or by a duly qualified and licensed surveyor or engineer, and I am a duly qualified and licensed surveyor or engineer, and I am duly sworn to the truth and accuracy of the same.

**ACKNOWLEDGEMENT**  
 STATE OF FLORIDA  
 COUNTY OF COLUMBIA  
 The foregoing decision was prepared by me or by a duly qualified and licensed surveyor or engineer, and I am a duly qualified and licensed surveyor or engineer, and I am duly sworn to the truth and accuracy of the same.

**ACKNOWLEDGEMENT**  
 STATE OF FLORIDA  
 COUNTY OF COLUMBIA  
 The foregoing decision was prepared by me or by a duly qualified and licensed surveyor or engineer, and I am a duly qualified and licensed surveyor or engineer, and I am duly sworn to the truth and accuracy of the same.

**ACKNOWLEDGEMENT**  
 STATE OF FLORIDA  
 COUNTY OF COLUMBIA  
 The foregoing decision was prepared by me or by a duly qualified and licensed surveyor or engineer, and I am a duly qualified and licensed surveyor or engineer, and I am duly sworn to the truth and accuracy of the same.

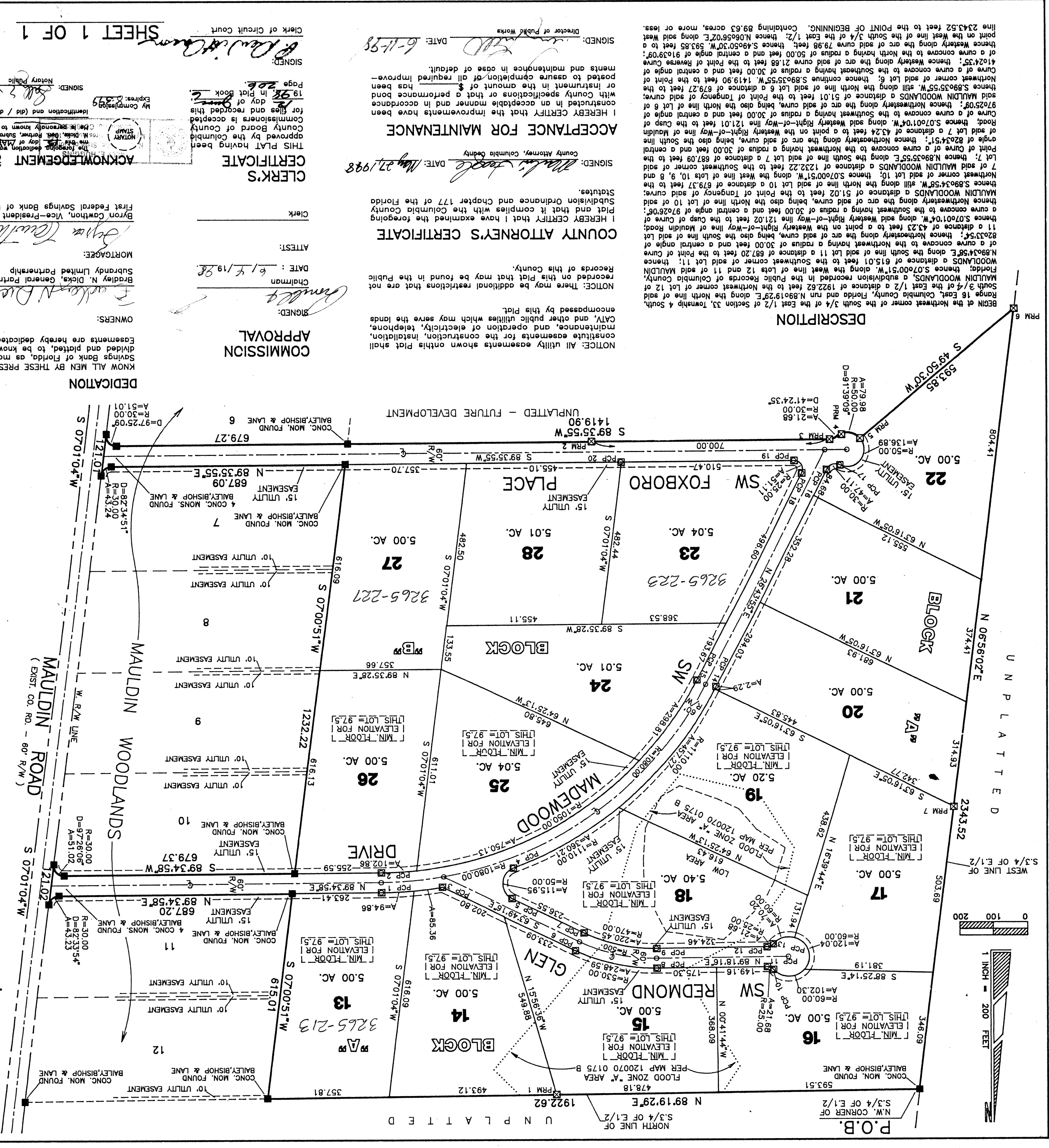
**ACKNOWLEDGEMENT**  
 STATE OF FLORIDA  
 COUNTY OF COLUMBIA  
 The foregoing decision was prepared by me or by a duly qualified and licensed surveyor or engineer, and I am a duly qualified and licensed surveyor or engineer, and I am duly sworn to the truth and accuracy of the same.

**ACKNOWLEDGEMENT**  
 STATE OF FLORIDA  
 COUNTY OF COLUMBIA  
 The foregoing decision was prepared by me or by a duly qualified and licensed surveyor or engineer, and I am a duly qualified and licensed surveyor or engineer, and I am duly sworn to the truth and accuracy of the same.

**ACKNOWLEDGEMENT**  
 STATE OF FLORIDA  
 COUNTY OF COLUMBIA  
 The foregoing decision was prepared by me or by a duly qualified and licensed surveyor or engineer, and I am a duly qualified and licensed surveyor or engineer, and I am duly sworn to the truth and accuracy of the same.

**ACKNOWLEDGEMENT**  
 STATE OF FLORIDA  
 COUNTY OF COLUMBIA  
 The foregoing decision was prepared by me or by a duly qualified and licensed surveyor or engineer, and I am a duly qualified and licensed surveyor or engineer, and I am duly sworn to the truth and accuracy of the same.

**ACKNOWLEDGEMENT**  
 STATE OF FLORIDA  
 COUNTY OF COLUMBIA  
 The foregoing decision was prepared by me or by a duly qualified and licensed surveyor or engineer, and I am a duly qualified and licensed surveyor or engineer, and I am duly sworn to the truth and accuracy of the same.



PLAT BOOK: 206 PAGE: 206

**MAULDIN WOODLANDS PHASE 2**  
 IN SECTION 33  
 TWP. 4 SOUTH, RGE. 16 EAST  
 COLUMBIA CO., FLORIDA

**LEGEND & NOTES**

- 1)  P.M. set with brass cap stamped LB 4016
- 2)  P.M. set with brass cap stamped LB 4016
- 3)  Concrete Monument set, LB 4016
- 4)  Subdivision phase, in place from previous
- 5)  Survey P.M. found in place from previous
- 6)  Survey P.M. found in place from previous
- 7)  Survey P.M. found in place from previous
- 8)  Survey P.M. found in place from previous
- 9)  Survey P.M. found in place from previous
- 10)  Survey P.M. found in place from previous
- 11)  Survey P.M. found in place from previous
- 12)  Survey P.M. found in place from previous
- 13)  Survey P.M. found in place from previous
- 14)  Survey P.M. found in place from previous
- 15)  Survey P.M. found in place from previous
- 16)  Survey P.M. found in place from previous
- 17)  Survey P.M. found in place from previous
- 18)  Survey P.M. found in place from previous
- 19)  Survey P.M. found in place from previous
- 20)  Survey P.M. found in place from previous
- 21)  Survey P.M. found in place from previous
- 22)  Survey P.M. found in place from previous
- 23)  Survey P.M. found in place from previous
- 24)  Survey P.M. found in place from previous
- 25)  Survey P.M. found in place from previous
- 26)  Survey P.M. found in place from previous
- 27)  Survey P.M. found in place from previous
- 28)  Survey P.M. found in place from previous
- 29)  Survey P.M. found in place from previous
- 30)  Survey P.M. found in place from previous
- 31)  Survey P.M. found in place from previous
- 32)  Survey P.M. found in place from previous

**NOTES & NOTES**

- 1) Survey P.M. found in place from previous
- 2) Survey P.M. found in place from previous
- 3) Survey P.M. found in place from previous
- 4) Survey P.M. found in place from previous
- 5) Survey P.M. found in place from previous
- 6) Survey P.M. found in place from previous
- 7) Survey P.M. found in place from previous
- 8) Survey P.M. found in place from previous
- 9) Survey P.M. found in place from previous
- 10) Survey P.M. found in place from previous
- 11) Survey P.M. found in place from previous
- 12) Survey P.M. found in place from previous
- 13) Survey P.M. found in place from previous
- 14) Survey P.M. found in place from previous
- 15) Survey P.M. found in place from previous
- 16) Survey P.M. found in place from previous
- 17) Survey P.M. found in place from previous
- 18) Survey P.M. found in place from previous
- 19) Survey P.M. found in place from previous
- 20) Survey P.M. found in place from previous
- 21) Survey P.M. found in place from previous
- 22) Survey P.M. found in place from previous
- 23) Survey P.M. found in place from previous
- 24) Survey P.M. found in place from previous
- 25) Survey P.M. found in place from previous
- 26) Survey P.M. found in place from previous
- 27) Survey P.M. found in place from previous
- 28) Survey P.M. found in place from previous
- 29) Survey P.M. found in place from previous
- 30) Survey P.M. found in place from previous
- 31) Survey P.M. found in place from previous
- 32) Survey P.M. found in place from previous

**COMMISSION APPROVAL**

NOTICE: All utility easements shown on this Plat shall be maintained, and operation of electric, telephone, CATV, and other public utilities which may serve the lands encompassed by this Plat.

I HEREBY CERTIFY that I have examined the foregoing Plat and that it complies with the Columbia County Records of this County.

Records of this County.

NOTICE: There may be additional restrictions that are not recorded on this Plat that may be found in the Public Records of this County.

**COUNTY ATTORNEY'S CERTIFICATE**

I HEREBY CERTIFY that the improvements have been recorded in accordance with the County Ordinance and Chapter 177 of the Florida Statutes.

County Attorney, Columbia County

SIGNED: *[Signature]* DATE: May 27, 1998

**ACCEPTANCE FOR MAINTENANCE**

I HEREBY CERTIFY that the improvements have been recorded in accordance with the County Ordinance and Chapter 177 of the Florida Statutes.

Director of Public Works

SIGNED: *[Signature]* DATE: 6-11-98

**CLERK'S CERTIFICATE**

THIS PLAT having been approved by the Columbia County Board of County Commissioners is hereby accepted for filing and recorded in the Public Records of this County.

Clerk

SIGNED: *[Signature]* DATE: 6-11-98

**ACKNOWLEDGEMENT**

I hereby certify that the improvements have been recorded in accordance with the County Ordinance and Chapter 177 of the Florida Statutes.

First Federal Savings Bank of Florida

SIGNED: *[Signature]* DATE: 6-11-98

**ACKNOWLEDGEMENT**

I hereby certify that the improvements have been recorded in accordance with the County Ordinance and Chapter 177 of the Florida Statutes.

First Federal Savings Bank of Florida

SIGNED: *[Signature]* DATE: 6-11-98

**ACKNOWLEDGEMENT**

I hereby certify that the improvements have been recorded in accordance with the County Ordinance and Chapter 177 of the Florida Statutes.

First Federal Savings Bank of Florida

SIGNED: *[Signature]* DATE: 6-11-98

OFFICIAL RECORDS  
 BOOK 206 PAGE 2022

FILE NUMBER 98-09365  
 FILED AND RECORDED IN THE OFFICIAL RECORDS  
 OF COLUMBIA COUNTY, FLORIDA  
 1998 MAY 27 10 52 AM  
 COUNTY CLERK, COLUMBIA COUNTY, FLORIDA  
 BY: *[Signature]*

UNPLATTED

UNPLATTED - FUTURE DEVELOPMENT

DESCRIPTION

BEGIN at the Northwest corner of the South 3/4 of the East 1/2 of Section 33, Township 4 South, Range 16 East, Columbia County, Florida; and thence North 88°19'29"E, along the North line of said South 3/4 of the East 1/2 of Section 33, Township 4 South, Range 16 East, Columbia County, Florida, for a distance of 1922.62 feet to the Northwest corner of Lot 12 of Block 14, containing 5.00 acres, more or less, of the MAULDIN WOODLANDS, as shown on the Plat of MAULDIN WOODLANDS PHASE 2, recorded in the Public Records of Columbia County, Florida, at Book 206, Page 2022.