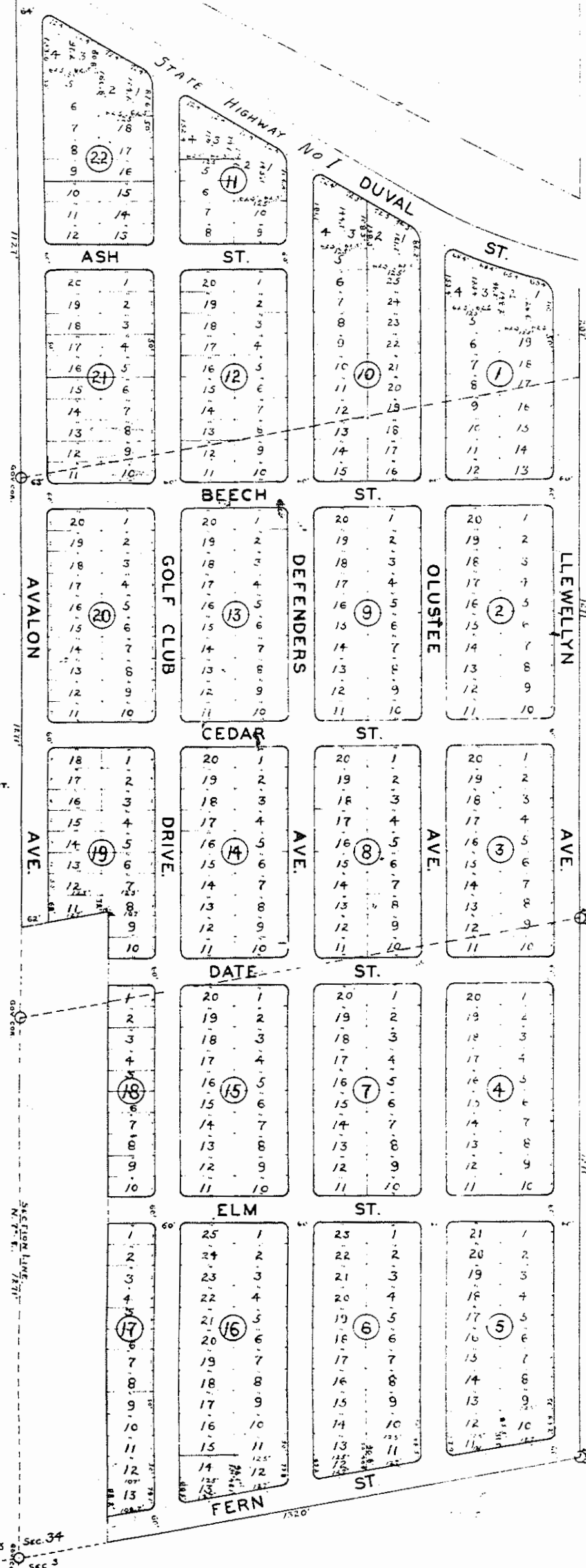


TO LAMP CITY

# COUNTRY CLUB

A SUBDIVISION OF  
THAT PART OF THE SW<sup>1</sup>/<sub>4</sub> OF THE NW<sup>1</sup>/<sub>4</sub> OF THE SW<sup>1</sup>/<sub>4</sub> OF THE NW<sup>1</sup>/<sub>4</sub> OF THE SW<sup>1</sup>/<sub>4</sub> LESS CORNER, AND THE SW<sup>1</sup>/<sub>4</sub> OF THE SW<sup>1</sup>/<sub>4</sub> LESS WEST SIDE, ALL BEING IN SEC. 34, TWP. 3 S., R. 10 E., COLUMBIA COUNTY, FLORIDA.



SCALE - 1" = 160'

LEGEND - P.R.M. = PERMANENT REFERENCE MONUMENT.  
NOTE - BLOCK CORNERS ROUNDED 15 FT. RADIUS.

Witness my hand and official seal at  
Tallahassee, Florida, on this 16th day of  
March, 1934.

State of Florida  
County of Columbia  
I, \_\_\_\_\_, County Clerk, do hereby certify that on this 16th day of  
before me, \_\_\_\_\_, personally appeared  
E. Ingraham, Vice President and Secretary of the  
Country Club Estate, and that he executed the foregoing application and generally  
execution thereof to the best of his knowledge and  
purpose, and that he is a duly qualified and  
witness my hand and official seal at  
Tallahassee, Florida, on this 16th day of  
March, 1934.

We certify that we are competent, disinterested  
and that we have read and understand the  
correct representation of the same and that  
reference monuments have been placed in the  
ground.

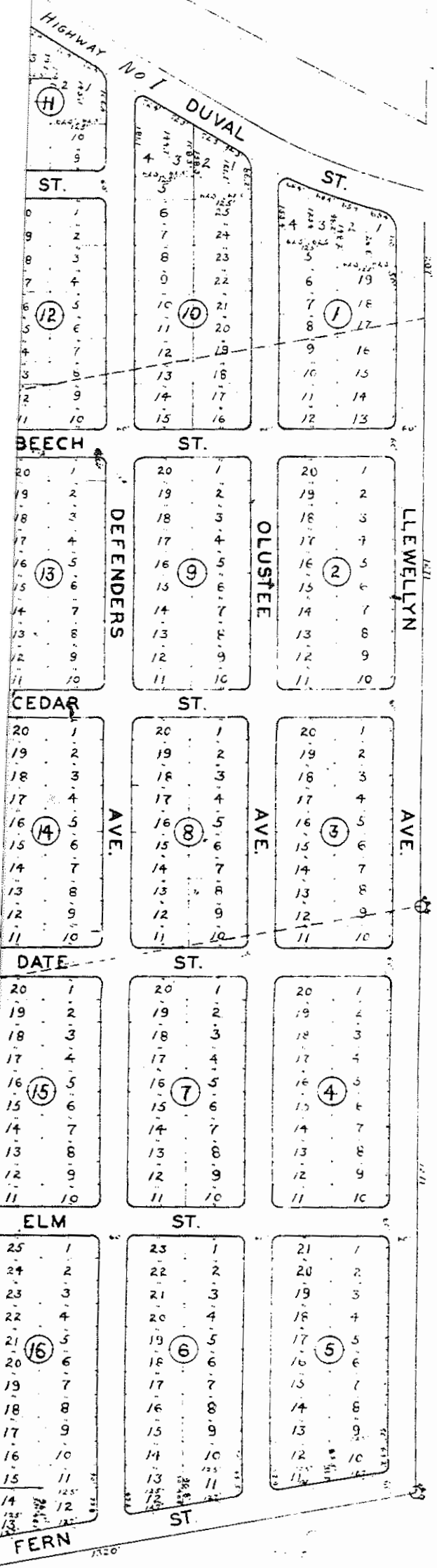
We certify that this plat is a correct  
and true representation of the same and that  
reference monuments have been placed in the  
ground.

We certify that this plat is a correct  
and true representation of the same and that  
reference monuments have been placed in the  
ground.

TOWNSHIP LINE  
N. 8<sup>th</sup> S. E.  
Sec. 33 Sec. 34  
Sec. 4 Sec. 3

# COUNTRY CLUB ESTATES

A SUBDIVISION OF  
 THAT PART OF THE SW<sup>1</sup>/<sub>4</sub> OF THE NW<sup>1</sup>/<sub>4</sub> LYING SOUTH OF  
 STATE ROAD #1, AND NW<sup>1</sup>/<sub>4</sub> OF THE SW<sup>1</sup>/<sub>4</sub> LESS 1 ACRE IN THE SW  
 CORNER, AND THE SW<sup>1</sup>/<sub>4</sub> OF THE SW<sup>1</sup>/<sub>4</sub> LESS 6 ACRES OFF THE  
 WEST SIDE, ALL BEING IN SEC. 34, TWP. 35, RANGE 17 E.  
 COLUMBIA COUNTY, FLORIDA.



Witnessed and attested my hand and official seal at Jacksonville, Florida, on this 16th day of September, A.D. 1925.

*L.T. Leslie* - Vice Pres  
*George L. Harris* - Sec

State of Florida  
 County of Duval  
 I hereby certify that on this 16th day of September, A.D. 1925, before me, the undersigned, personally appeared **L.T. Leslie** and **George L. Harris**, Vice President and Secretary respectively of the Columbia Country Club, and that they acknowledged to me their true and correct names to be the individuals who executed the foregoing application and severally acknowledged the execution thereof to be their true act and deed for the uses and purposes therein mentioned.

Witness my hand and official seal at Jacksonville, Florida, on this 16th day of September, A.D. 1925.

*L.T. Leslie*  
*George L. Harris*

My commission expires  
 March 18, 1924.

We certify that we are competent surveyors and that we made the survey and plat hereby submitted and that this plat is a correct representation of the land plat and that permanent reference monuments have been put in accordance with the plan.

*W. W. Brown*  
*W. W. Brown*

We certify that this plat is approved.

*E. C. [Signature]*

Notary Public for Florida

My commission expires  
 [Date]