

## MELROSE PARK ADDITION NO. 1

A subdivision of a part of the SE 1/4 of NW 1/4 N.E. 1/4 of SW 1/4 and NW 1/4 of SE 1/4 of Section 33, Twp. 3-South, Range 17-East, Columbia County, State of Florida.

## DESCRIPTION

Begin at the SW COR. OF THE NW 1/4 of S. E. 1/4, Section 33, Twp. 3-South, Range 17-East, Columbia County, Florida and run thence N. 88° 02' E. 204 FT. thence N. 7° 50' E. 1292.5 FT., thence N. 89° 18' E. 86.3 FT., thence N. 88° 02' E. 20 FT., thence S. 89° 18' W. 271 FT., thence N. 88° 02' E. 116.6 FT., thence S. 88° 04' W. 126 FT., thence S. 7° 50' W. 1422.3 FT., thence N. 88° 02' E. 106 FT. to Point of Beginning.

## DEDICATION

Known all men by these present, that ACME REALTY COMPANY, a Florida Corporation, owners, have caused the lands shown on this plat to be surveyed, laid out and platted to be known as MELROSE PARK-ADDITION NO. 1. In witness whereof, the said ACME Realty Company have caused these presents to be signed in its name by its President, and corporate seal to be affixed, attested by its Secretary, this 2<sup>nd</sup> day of July, A.D. 1944.

We hereby dedicate to the public the streets and avenues as shown on the plat.

Signed W. L. Anderson, President

Attest B. J. Anderson, Secretary

## ACKNOWLEDGMENT

STATE OF FLORIDA  
COUNTY OF COLUMBIA

I hereby certify that on this day of May, A.D. 1944, before me personally appeared W. L. Anderson and B. J. Anderson, respectively President and Secretary of ACME REALTY CO. a corporation under the laws of the State of Florida, to me known to be the individuals and officers described in and who executed the foregoing dedication and severally acknowledged the execution thereof to be their free act and deed as such officers thereunto duly authorized, and that the official seal of said Corporation is duly affixed thereto, and the said dedication is the act and deed of said Corporation.

Witnessed my signature and official seal at Lake City, State of Florida the day and year first aforesaid.

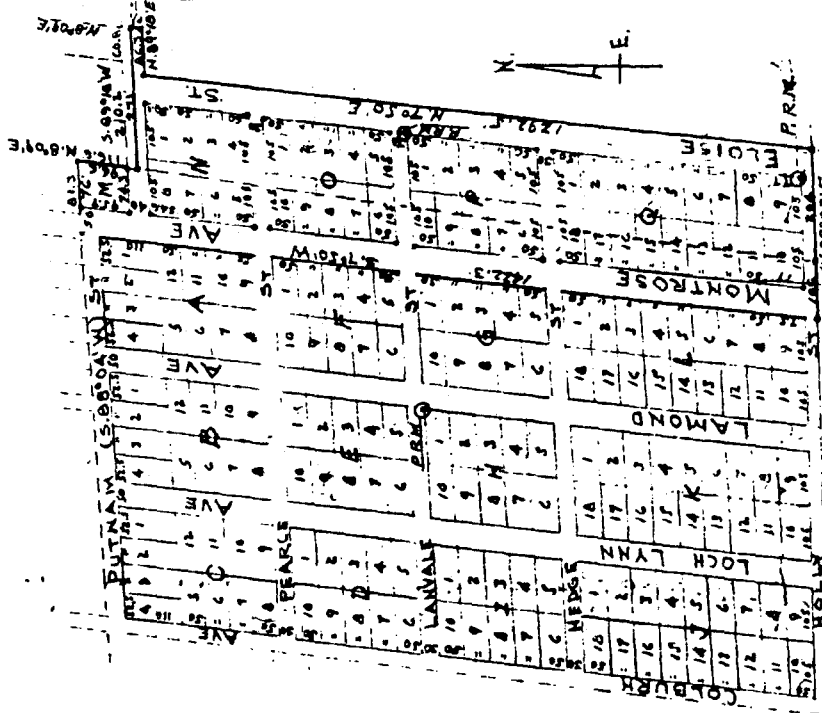
Signed

Mary Tullie, State Notary

My Commission expires on the

day of

A.D. 19



## SURVEYORS CERTIFICATE

I do hereby certify that this is a correct representation of the above described lands and subdivision thereof and P.R.M.s have been set as required by the law and as shown on this plat. Dated at Lake City, State of Florida this 13<sup>th</sup> day of May, A.D. 1944. Scale 1" = 200'

W. B. Moore, Surveyor  
Cer No. 439

Approved by Board of County Commissioners of Columbia County, State of Florida on this 13<sup>th</sup> day of May, A.D. 1944.  
Signed W. B. Moore, Chairman  
Attest W. B. Moore, Clerk

NOTE - SW CORNER of NE 1/4 Section 33, Twp. 3 South, Range 17 East not included in this plat.  
0 = Iron Pipe Set in Concrete