

CITY COMMISSION APPROVAL

The Re Plat of Lots 277, 278, 279, 290, 291, 292 and a part of Lots 297 and 298 of the Eastern Division of the City of Lake City, Florida is hereby approved as shown on the Plat hereon delineated.

Date NOV 10th 1944

Signed H. G. Boehman, Mayor
Attest R. C. Mansfield, Clerk.

OAK PARK

A Re Plat of Lots 277, 278, 279, 290, 291, 292 & a part of Lots 297 and 298 of the Eastern Division of the City of Lake City, Florida

DESCRIPTION

Begin at a point on the East Line of Sec. 32, Twa. 3-S, Range 17-E. 285.44 feet N. 7° 38' E. of the S.E. Cor. of S.E. 1/4 of N.E. 1/4 of said Section 32 and run thence South 88° 37' West 324.10 feet, thence S. 0° 21' W. 249.60 feet, thence S. 88° 22' W. 1326.00 feet, thence N. 0° 21' E. 547.70 feet, thence S. 88° 31' E. 1684.70 feet, thence S. 7° 30' W. 261.60 feet to point of Beginning.

ACKNOWLEDGMENT

State of Florida,
County of Columbia.
I hereby Certify that on this 21st day of November, A.D. 1944 before me Leo J. Gelberg personally appeared LEO J. GELBERG, A Widower, to me well known and known to me to be the individual described in, and who executed the following Dedication and acknowledged the execution thereof to be his free act and deed for the use and purposes therein mentioned.
Witness my hand and official Seal at Lake City, Columbia County, Florida on this 21st day of November, A.D. 1944

COUNTY COMMISSION APPROVAL

The subdivision of the lands above described and shown on the Plat hereon delineated is hereby approved

Date Feb 16th 1945

Signed W. J. G. ..., Chairman
Attest H. ..., Clerk

SURVEYORS CERTIFICATE

I hereby certify that I am a duly authorized Land Surveyor and that a survey of the lands hereon platted was made under my direction and that the plat is a true and correct representation of the lands surveyed and that permanent reference monuments has been placed as indicated and in accordance with the laws.

Dated Oct. 30th, 1944

Signed B. G. Moore, Surveyor
B. G. Moore, Cor. No. 439

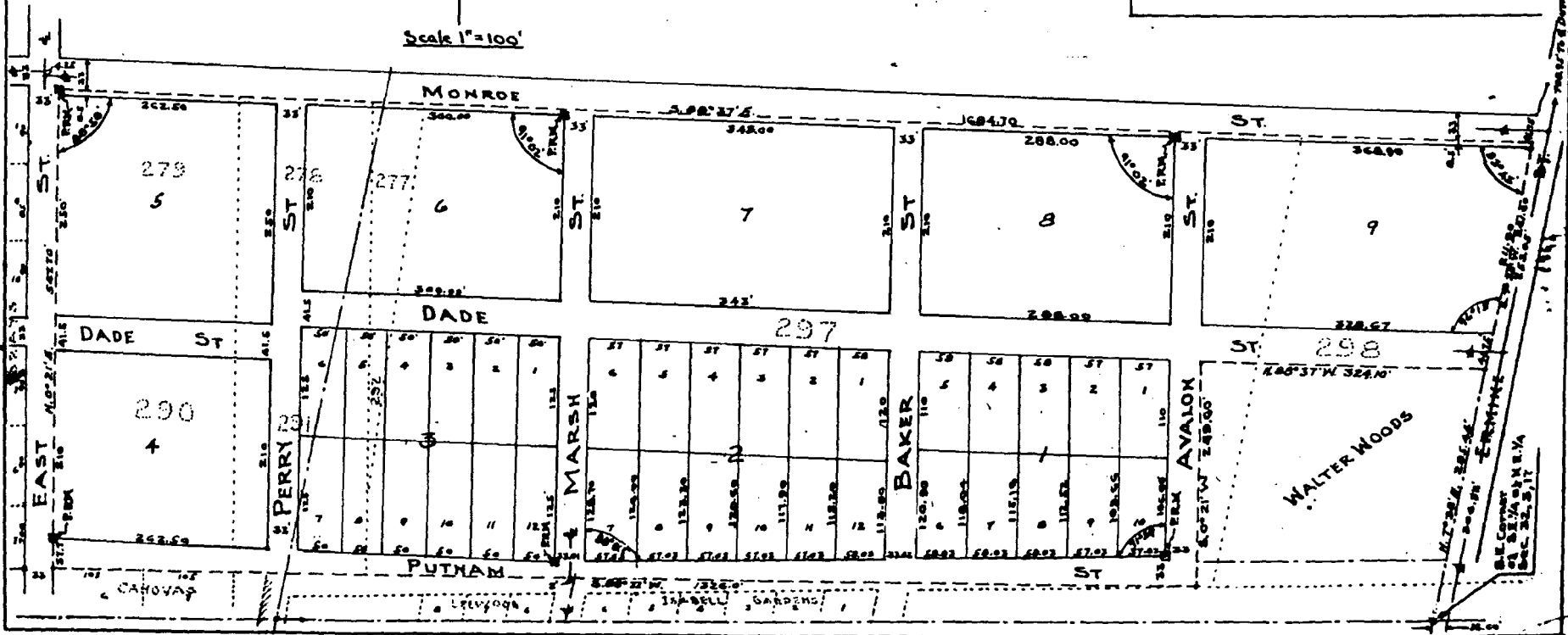
DEDICATION

Known all men by these present that LEO J. GELBERG, A Widower, owner has caused the lands embraced on this plat to be surveyed, laid-out and platted to be known as OAK PARK and the streets are hereby dedicated to the public.

Leo J. Gelberg Seal
Witnesses Leo J. Gelberg



Scale 1" = 100'



Leave 3" Margin On Prints For Binding