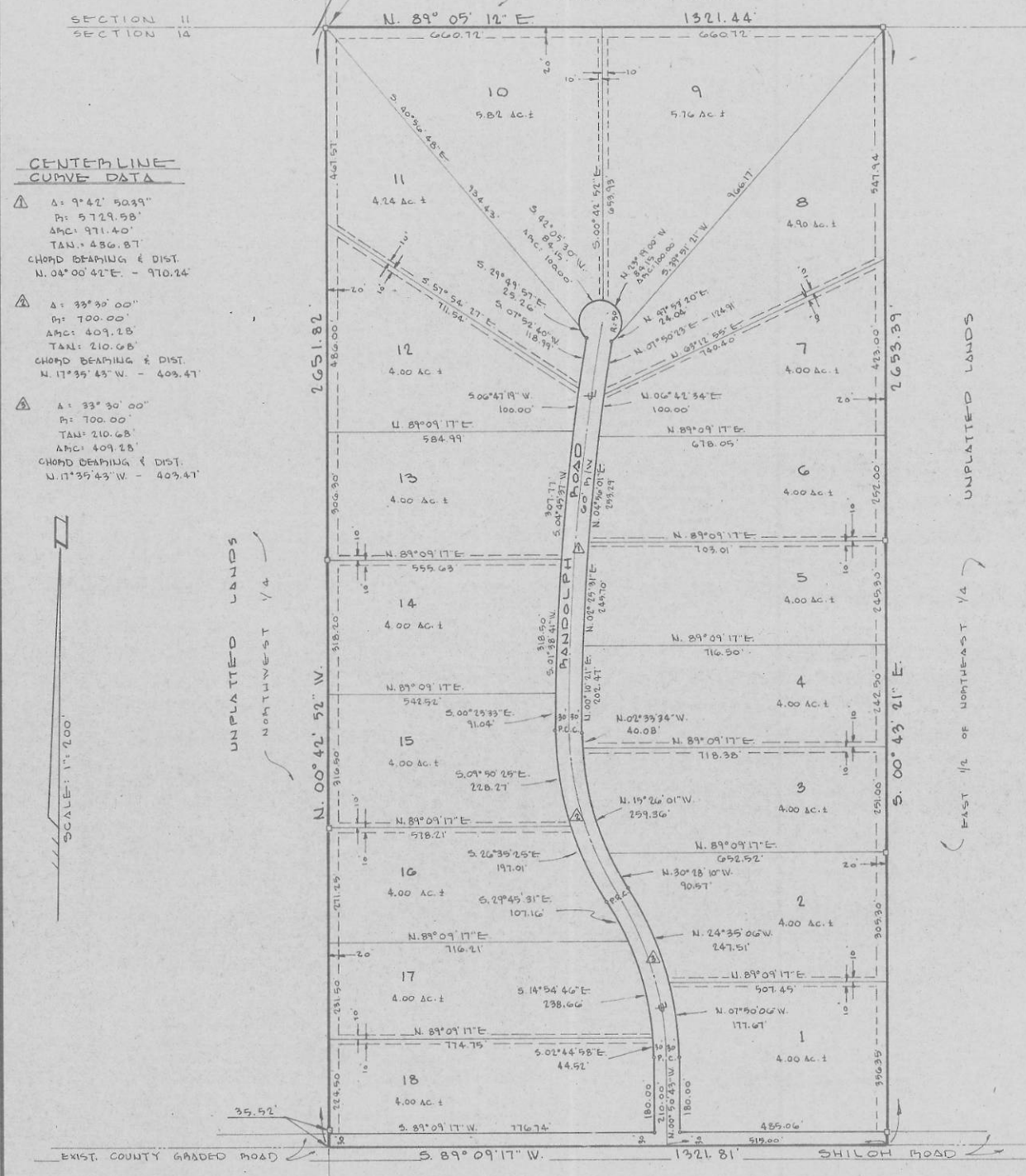


114

# SANDY PINES

SITUATED IN SECTION 14, TOWNSHIP 7 SOUTH, RANGE 16 EAST, COLUMBIA COUNTY, FLORIDA.

In Computers



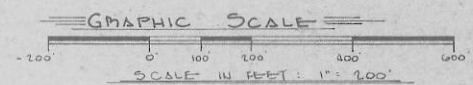
### CENTERLINE CURVE DATA

- △ A: 9°42' 50.39"  
R: 572.958'  
ΔPC: 971.40'  
TAN: 486.87'  
CHORD BEARING & DIST.  
N. 04°00'41"E. - 970.24'
- △ A: 33°30' 00"  
R: 700.00'  
ΔPC: 409.28'  
TAN: 210.68'  
CHORD BEARING & DIST.  
N. 17°35'43"W. - 403.47'
- △ A: 33°30' 00"  
R: 700.00'  
ΔPC: 409.28'  
TAN: 210.68'  
CHORD BEARING & DIST.  
N. 17°35'43"W. - 403.47'

SCALE: 1" = 200'

### DESCRIPTION:

THE WEST 1/2 OF THE NORTHEAST 1/4 OF SECTION 14, TOWNSHIP 7 SOUTH, RANGE 16 EAST, COLUMBIA COUNTY, FLORIDA, BEING MORE PARTICULARLY DESCRIBED AS FOLLOWS: FOR POINT OF BEGINNING COMMENCE AT THE NORTHWEST CORNER OF SAID WEST 1/2 OF THE NORTHEAST 1/4. THENCE RUN NORTH 89°05'12" EAST, ALONG THE NORTH LINE OF SAID NORTHEAST 1/4, A DISTANCE OF 1321.44 FEET; THENCE RUN SOUTH 00°43'21" EAST ALONG THE EAST LINE OF SAID WEST 1/2 OF THE NORTHEAST 1/4, A DISTANCE OF 2653.39 FEET; THENCE RUN SOUTH 89°09'17" WEST ALONG THE SOUTH LINE OF SAID NORTHEAST 1/4, A DISTANCE OF 1321.81 FEET; THENCE RUN NORTH 00°42'52" WEST ALONG THE WEST LINE OF SAID WEST 1/2 OF THE NORTHEAST 1/4, A DISTANCE OF 2651.82 FEET TO THE POINT OF BEGINNING, CONTAINING 80.48 ACRES MORE OR LESS.



### LEGEND:

- 1) □ = PERMANENT REFERENCE MONUMENT (P.R.M.), 4" x 4" CONCRETE MONUMENT
- 2) ○ = PERMANENT CONTROL POINT (P.C.P.), 4" x 4" CONCRETE MONUMENT
- 3) BEARINGS PROJECTED FROM COUNTY ROAD N°138.
- 4) DENOTES UTILITY EASEMENTS

### NOTES:

- 1) CLOSURE = 1" = 43,500'
- 2) DATE OF BOARD OF COUNTY COMMISSIONER'S APPROVAL OF PRELIMINARY PLAN - OCT. 20, 1982.

### SURVEYOR'S CERTIFICATE:

I HEREBY CERTIFY THAT THIS PLAT IS A TRUE AND CORRECT REPRESENTATION OF THE LANDS SURVEYED AND SHOWN HEREON, THAT THE SURVEY WAS MADE UNDER MY DIRECTION AND SUPERVISION, AND THAT PERMANENT CONTROL POINTS AND PERMANENT REFERENCE MONUMENTS HAVE BEEN SET AND THAT THE SURVEY DATA COMPLIES WITH THE COLUMBIA COUNTY SUBDIVISION ORDINANCE N°78-7 AND WITH CHAPTER 117 OF THE FLORIDA STATUTES.

G. Sherman Fries  
J. SHERMAN FRIES, P.L.S.  
FLA. CERT. NO. 2245  
DATE: May 20, 1983

J. SHERMAN FRIES & ASSOCIATES  
LAND SURVEYORS  
P.O. BOX 880, LIVE OAK, FLA. 32060  
PHONE: 904-362-4629

FILE NO. 830 5466  
RECORDED  
BOOK 5 PAGE 32-32A  
83 JUL-6 1983  
JERRY A. BROWN  
CLERK OF COURTS  
COLUMBIA COUNTY, FLORIDA

# SANDY PINES

SITUATED IN

SECTION 14, TOWNSHIP 7 SOUTH,  
RANGE 16 EAST, COLUMBIA COUNTY,  
FLORIDA.

### ADOPTION AND DEDICATION:

KNOW ALL MEN BY THESE PRESENTS THAT RANDOLPH A. GREENE, JR. AND LESLIE A. GREENE, PRESIDENT AND SECRETARY RESPECTIVELY OF STEWART GREENE AND COMPANY, A FLORIDA CORPORATION AS OWNERS HAVE CAUSED THE LANDS HEREIN DESCRIBED TO BE SURVEYED, SUBDIVIDED AND PLATTED TO BE KNOWN AS SANDY PINES AND THAT THE ROADS AND EASEMENTS AS SHOWN AND DEPICTED HEREON ARE HEREBY DEDICATED TO THE PERPETUAL USE OF THE PUBLIC FOR PROPER USES AND PURPOSES THEREON STATED.

IN WITNESS WHEREOF STEWART, GREENE AND COMPANY, A FLORIDA CORPORATION HAVE CAUSED THESE PRESENTS TO BE EXECUTED WITH ITS SEAL DULY AFFIXED HERETO.

WITNESS: Phyllis J. Johnson RANDOLPH A. GREENE, JR.: Randolph A. Greene  
(PRESIDENT)  
WITNESS: Wm. D. Smith LESLIE A. GREENE: Leslie A. Greene  
(SECRETARY)

### STATE OF FLORIDA, COUNTY OF SUWANNEE:

I HEREBY CERTIFY THAT ON THIS 5 DAY OF July A.D. 1983 BEFORE ME PERSONALLY APPEARED RANDOLPH A. GREENE, JR., AND LESLIE A. GREENE, PRESIDENT AND SECRETARY RESPECTIVELY OF STEWART, GREENE AND COMPANY, A FLORIDA CORPORATION, AS OWNERS, TO ME KNOWN TO BE THE INDIVIDUALS AND OFFICERS DESCRIBED IN AND WHO EXECUTED THE FOREGOING DEDICATION, AND THEY ACKNOWLEDGED EXECUTION THEREOF FOR AND ON BEHALF OF SAID CORPORATION WITH THEIR SEAL AFFIXED HERETO.

WITNESS MY HAND AND SEAL AT Lake City STATE OF FLORIDA, THIS 5 DAY OF July 1983.

Saul J. Biss  
NOTARY PUBLIC, STATE OF FLORIDA  
MY COMMISSION EXPIRES: July 12, 1986

### DEDICATION FOR MORTGAGEE:

THIS IS TO CERTIFY THAT JAMES D. FEAGLE, BEING A MORTGAGEE OF THE LANDS DESCRIBED IN THE FOREGOING CAPTION OF THIS PLAT, DOES HEREBY JOIN IN AND MAKES HIMSELF A PARTY OF THE DEDICATION OF SAID LANDS AND PLAT KNOWN AS SANDY PINES FOR THE USES AND PURPOSES THEREIN EXPRESSED AND DEDICATE THE ROADS AND EASEMENTS SHOWN TO THE PUBLIC.

WITNESS: Diana P. ... WITNESS: Brenda H. Law James D. Feagle  
JAMES D. FEAGLE

### STATE OF FLORIDA, COUNTY OF COLUMBIA:

I HEREBY CERTIFY THAT ON THIS 5 DAY OF July A.D. 1983 BEFORE ME PERSONALLY APPEARED JAMES D. FEAGLE, MORTGAGEE, TO ME KNOWN TO BE THE INDIVIDUAL DESCRIBED IN AND WHO EXECUTED THE FOREGOING DEDICATION, AND HE ACKNOWLEDGED EXECUTION THEREOF.

WITNESS MY HAND AND SEAL AT Lake City STATE OF FLORIDA, THIS 5 DAY OF July A.D. 1983.

Diana P. ...  
NOTARY PUBLIC, STATE OF FLORIDA.  
MY COMMISSION EXPIRES: Oct 27, 1984

### APPROVED BY BOARD OF COUNTY COMMISSIONERS: COLUMBIA COUNTY, FLORIDA:

SIGNED: William ... CHAIRMAN

ATTEST: Mary B. ... CLERK

DATE: July 5, 1983

### CERTIFICATE OF CLERK:

THIS PLAT HAVING BEEN APPROVED BY THE COLUMBIA COUNTY BOARD OF COUNTY COMMISSIONERS, IS ACCEPTED FOR FILE AND RECORDED THIS 5 DAY OF July A.D. 1983 IN PLAT BOOK 5 PAGE 32-A

Mary B. ...  
CLERK OF THE CIRCUIT COURT  
COLUMBIA COUNTY, FLORIDA.

### COUNTY ATTORNEY'S CERTIFICATE:

I HEREBY CERTIFY THAT I HAVE EXAMINED THE FOREGOING PLAT AND THAT IT COMPLIES IN FORM WITH COLUMBIA COUNTY SUBDIVISION ORDINANCE NO. 78-7 AND CHAPTER 177 OF THE FLORIDA STATUTES.

DATE: July 5, 1983

Amos D. Page  
COUNTY ATTORNEY

### COUNTY ACCEPTANCE FOR MAINTENANCE:

I HEREBY CERTIFY THAT THE IMPROVEMENTS HAVE BEEN CONSTRUCTED IN AN ACCEPTABLE MANNER AND IN ACCORDANCE WITH COUNTY SPECIFICATIONS OR THAT A PERFORMANCE BOND OR INSTRUMENT IN THE AMOUNT OF        HAS BEEN POSTED TO ASSURE COMPLETION OF ALL REQUIRED IMPROVEMENTS AND MAINTENANCE IN CASE OF DEFAULT.

DATE: 5-26-83

Mike Roberts  
COUNTY ENGINEER

J. SHERMAN FRIEM & ASSOCIATES  
LAND SURVEYORS  
P.O. BOX 580 LIVE OAK, FLA. 32060  
PHONE: 904-362-4629