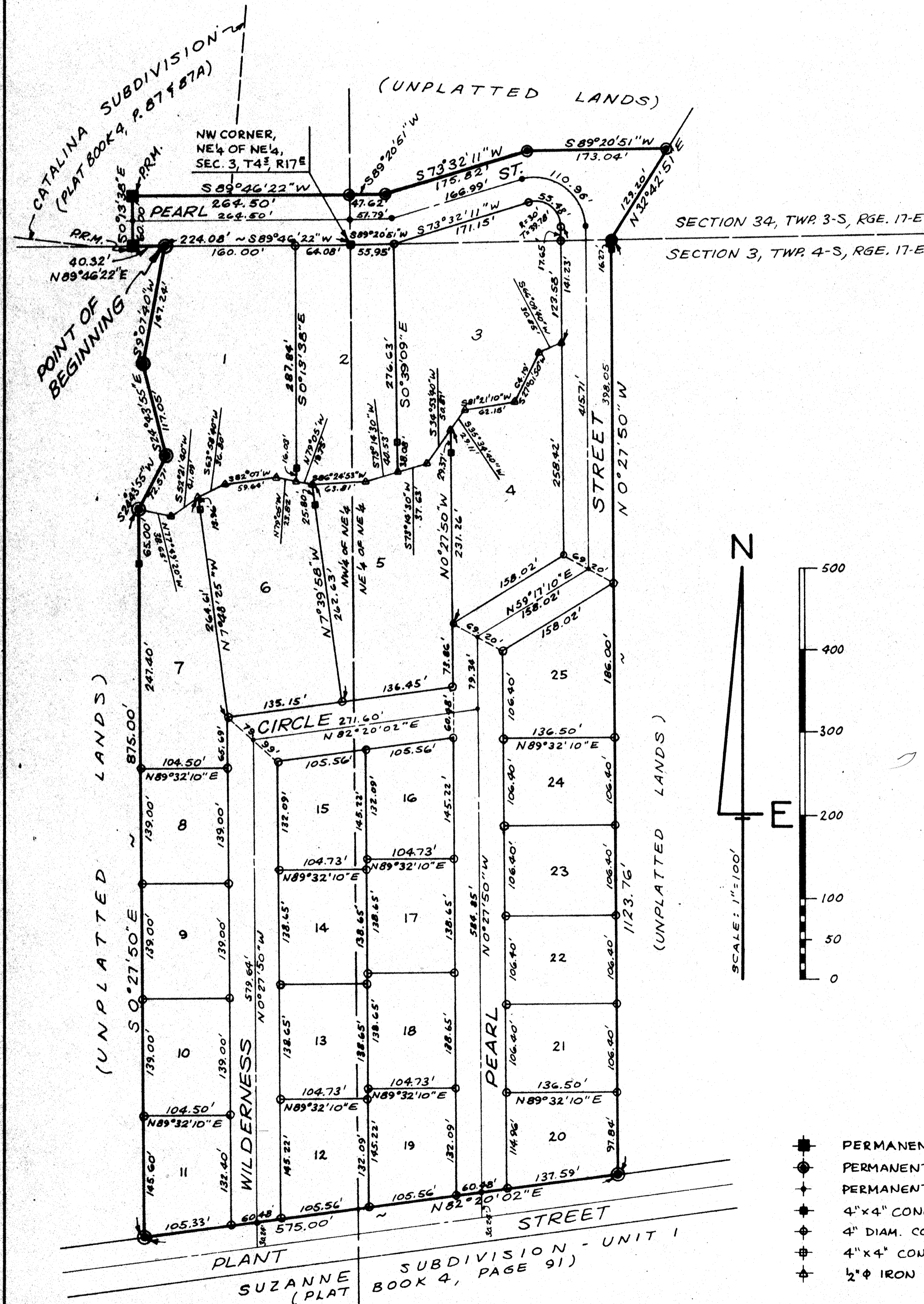


SUZANNE SUBDIVISION - UNIT 5

BEING A SUBDIVISION OF A PART OF THE N 1/2 OF NE 1/4 OF SECTION 3, TOWNSHIP 4 SOUTH, RANGE 17 EAST,
AND A PART OF THE S 1/2 OF SE 1/4 OF SECTION 34, TOWNSHIP 3 SOUTH, RANGE 17 EAST,
COLUMBIA COUNTY, FLORIDA

RECORDED
BOOK 4 PAGE 100
1978 AUG 22 AM 10:57
Mary B. Chids
CLERK OF CIRCUIT COURT
COLUMBIA COUNTY, FLORIDA

85



DESCRIPTION:

COMMENCE AT THE NORTHWEST CORNER OF THE NE 1/4 OF NE 1/4 OF SECTION 3, TOWNSHIP 4 SOUTH, RANGE 17 EAST, COLUMBIA COUNTY, FLORIDA, AND RUN S 89°46'22" W ALONG THE NORTH LINE OF SAID NE 1/4, 224.08 FEET TO THE POINT-OF-BEGINNING, THENCE S 9°07'40" W, 147.24 FEET, THENCE S 24°43'55" E, 117.05 FEET, THENCE S 24°43'55" W, 72.57 FEET, THENCE S 0°27'50" E, 875.00 FEET, THENCE N 82°20'02" E, 575.00 FEET, THENCE N 0°27'50" W, 1123.76 FEET TO SAID NORTH LINE OF NE 1/4 (ALSO BEING THE SOUTH LINE OF SECTION 34, TOWNSHIP 3 SOUTH, RANGE 17 EAST, COLUMBIA COUNTY, FLORIDA), THENCE N 32°42'51" E, 129.20 FEET, THENCE S 89°20'51" W, 173.04 FEET, THENCE S 73°32'11" W, 175.82 FEET, THENCE S 89°20'51" W, 47.62 FEET, THENCE S 89°46'22" W, 264.50 FEET, THENCE S 0°13'38" E, 60.00 FEET, TO SAID NORTH LINE OF NE 1/4 OF SECTION 3, THENCE N 89°46'22" E, 40.32 FEET TO THE POINT-OF-BEGINNING.

DEDICATION:

KNOW ALL MEN BY THESE PRESENTS THAT D. B. ESPENSHIP III AND LINDA NELL ESPENSHIP, HIS WIFE, AS OWNERS, HAVE CAUSED THE LANDS HEREIN DESCRIBED TO BE SURVEYED, LAID OUT, SUBDIVIDED AND PLATTED TO BE KNOWN AS "SUZANNE SUBDIVISION - UNIT 5," AND THAT THE ROADS AND EASEMENTS ARE HEREBY DEDICATED TO THE PUBLIC.

DATE August 11, 1978 SIGNED D. B. Espenship III WITNESS Eva E. Maxwell
D. B. ESPENSHIP, III / OWNER
SIGNED Linda Nell Espenship WITNESS Helen A. Waters
LINDA NELL ESPENSHIP, OWNER

ACKNOWLEDGEMENT:

STATE OF FLORIDA
COUNTY OF COLUMBIA
ON THIS 10th DAY OF August, A.D. 1978, THE FOREGOING INSTRUMENT WAS ACKNOWLEDGED BEFORE ME BY D. B. ESPENSHIP, III AND LINDA NELL ESPENSHIP, HIS WIFE, AS OWNERS.

SIGNED Helen A. Waters
NOTARY PUBLIC, STATE OF FLORIDA
MY COMMISSION EXPIRES Dec. 20, 1978

SURVEYOR'S CERTIFICATE:

I HEREBY CERTIFY THAT THIS PLAT IS A TRUE AND CORRECT REPRESENTATION OF THE LANDS SURVEYED AND SHOWN HEREON, THAT THE SURVEY WAS MADE UNDER MY RESPONSIBLE DIRECTION AND SUPERVISION, THAT PERMANENT REFERENCE MONUMENTS AND PERMANENT CONTROL POINTS HAVE BEEN PLACED AS SHOWN, AND THAT THE SURVEY DATA SHOWN HEREON COMPLIES WITH ALL THE REQUIREMENTS OF CHAPTER 177, FLORIDA STATUTES.

DATE July 27, 1978 SIGNED W. C. Hale
W. C. HALE, LAND SURVEYOR
FLORIDA CERTIFICATE NO. 1519

COUNTY ATTORNEY'S CERTIFICATE:

I HEREBY CERTIFY THAT I HAVE EXAMINED THE FOREGOING PLAT AND THAT IT COMPLIES IN FORM WITH THE REQUIREMENTS OF CHAPTER 177, FLORIDA STATUTES.

DATE August 17, 1978 SIGNED Mad D. Page
COUNTY ATTORNEY

APPROVED BY THE BOARD OF COUNTY COMMISSIONERS COLUMBIA COUNTY, FLORIDA

SIGNED Marion Mann ATTEST Mary B. Chids
CHAIRMAN CLERK
DATE 8-17-78

CERTIFICATE OF THE CLERK:

I HEREBY CERTIFY THAT THE FOREGOING PLAT, HAVING BEEN DULY APPROVED BY THE BOARD OF COUNTY COMMISSIONERS OF COLUMBIA COUNTY, FLORIDA, WAS ACCEPTED BY ME AND FILED FOR RECORD THIS 22nd DAY OF August, A.D. 1978, IN PLAT BOOK 4, PAGE 100, OF THE PUBLIC RECORDS OF COLUMBIA COUNTY, FLORIDA.

SIGNED Mary B. Chids
CLERK OF CIRCUIT COURT
COLUMBIA COUNTY, FLORIDA

- PERMANENT REFERENCE MONUMENT, CATALINA SUBDIVISION (BY OTHERS)
- PERMANENT REFERENCE MONUMENT (4" DIAM. CONC. MON.)
- ⊕ PERMANENT CONTROL POINT
- ⊙ 4" x 4" CONC. MONUMENT, FOUND
- ⊙ 4" DIAM. CONC. MONUMENT, SET
- ⊙ 4" x 4" CONC. MONUMENT, SET
- ⊙ 1/2" IRON PIPE, SET