

THREE RIVERS ESTATES

UNIT NO. 14

TRACT NO. 1

COMMENCE AT THE AFOREMENTIONED SOUTHWEST CORNER OF THE SOUTHEAST 1/4 OF SECTION 36; RUN THENCE N. 89° 26' E. ALONG THE SOUTH LINE OF SAID SECTION 36, A DISTANCE OF 860.17 FEET; THENCE N. 10° 34' W., 67.02 FEET TO THE POINT OF BEGINNING; THENCE CONTINUE N. 10° 34' W., 203.08 FEET; THENCE N. 89° 26' E., 239.84 FEET; THENCE S. 0° 34' E., 200.00 FEET; THENCE S. 89° 26' W., 204.58 FEET TO THE POINT OF BEGINNING.

TRACT NO. 2

COMMENCE AT THE AFOREMENTIONED SOUTHWEST CORNER OF THE SOUTHEAST 1/4 OF SECTION 36; RUN THENCE N. 89° 26' E. ALONG THE SOUTH LINE OF SAID SECTION 36, A DISTANCE OF 360.17 FEET; THENCE N. 10° 34' W., 148.02 FEET TO THE POINT OF BEGINNING; THENCE CONTINUE N. 10° 34' W., 162.00 FEET; THENCE S. 89° 26' W., 529.31 FEET; THENCE N. 10° 19' E., 241.07 FEET; THENCE N. 14° 11' W., 394.34 FEET; THENCE N. 89° 26' E., 467.31 FEET; THENCE N. 10° 34' W., 99.66 FEET; THENCE N. 89° 26' E., 479.21 FEET; THENCE S. 66° 49' E., 24.62 FEET; THENCE S. 10° 34' E., 880.93 FEET; THENCE S. 89° 26' W., 500.00 FEET TO THE POINT OF BEGINNING.

TRACT NO. 3

COMMENCE AT THE AFOREMENTIONED SOUTHWEST CORNER OF THE SOUTHEAST 1/4 OF SECTION 36; RUN THENCE N. 89° 26' E. ALONG THE SOUTH LINE OF SAID SECTION 36, A DISTANCE OF 1053.11 FEET; THENCE N. 0° 34' W., 1111.10 FEET TO THE POINT OF BEGINNING; THENCE S. 89° 26' W., 390.05 FEET; THENCE N. 10° 34' W., 600.48 FEET; THENCE N. 7° 20' E., 685.02 FEET; THENCE N. 89° 26' E., 479.19 FEET; THENCE N. 7° 20' E., 161.50 FEET; THENCE S. 89° 26' W., 479.19 FEET; THENCE N. 7° 20' E., 847.87 FEET; THENCE N. 89° 26' E., 343.82 FEET; THENCE S. 27° 04' E., 226.55 FEET; THENCE S. 7° 20' W., 626.78 FEET; THENCE N. 89° 26' E., 382.04 FEET; THENCE S. 0° 34' E., 748.10 FEET; THENCE S. 89° 26' W., 486.00 FEET; THENCE S. 0° 34' E., 710.00 FEET TO THE POINT OF BEGINNING.

"SEAL"

SURVEYORS CERTIFICATE:

I hereby certify that this plat is a true and correct representation of the land surveyed and shown hereon, that the survey was made under my responsible direction and supervision, that permanent reference monuments and permanent control points have been placed as shown, and that the survey data shown complies with all the requirements of chapter 177, Florida Statutes.

Bennett R. Wattle
BENNETT R. WATTLE, P.L.S.
FLA. REG. CERT. NO. 1443

**THREE RIVERS ESTATES
UNIT NO. 14**

A SUBDIVISION OF A PART OF SECTION 36
TOWNSHIP 6 SOUTH, RANGE 15 EAST
COLUMBIA COUNTY, FLORIDA

DESCRIPTION:

Begin at the Southwest Corner of the Southeast 1/4, Section 36, Township 6 South, Range 15 East, Columbia County, Florida, and run S89°26'W, 281.04 feet along South Line said section 36, thence N 10°10'E, 552.68 feet; thence N 14°11'W, 671.26 feet; thence N 38°41'W, 276.12 feet; thence N 17°35'W, 313.89 feet; thence N 86°31'W, 2.10 feet; thence N 0°42'W, 33.09 feet; thence S 86°31'E, 162.20 feet; thence S 54°35'E, 732.07 feet; thence S 66°49'E, 548.55 feet; thence N 10°34'W, 621.08 feet; thence N 17°20'E, 1000.07 feet; thence N 13°59'E, 275.10 feet; thence S 21°04'E, 1369.97 feet; thence S 0°34'E, 748.10 feet; thence S 89°26'W, 486.00 feet; thence S 0°34'E, 1821.80 feet; thence S 89°26'W, 1120.13 feet to the Point of Beginning; Less and Except the following TRACTS as described on sheet 2 of this plat:

DEDICATION:

Know all men present that the Three Rivers Estates Inc., Incorporated in the State of New Jersey and Licensed in the State of Florida has caused the lands herein described to be surveyed, Laid out, Sub-Divided and Platted to be known as Three Rivers Estates, Unit No. 14, in witness thereof the said Three Rivers Estates Inc. has caused these present to be signed in its name by its President and Secretary and its Corporate Seal to be affixed and that the streets and Boulevards as shown are hereby Dedicated to the Public.

SIGNED *Sidney Hodor* PRESIDENT
ATTEST *Louis Hodor* SECRETARY
DATE Feb 15, 1964
THREE RIVERS ESTATES, INC.

"SEAL"

ACKNOWLEDGMENT:

STATE OF FLORIDA
COUNTY OF DADE
I hereby certify that on this 15th Day of February 1964 before me personally appeared Sidney Hodor and Louis Hodor Respectively President and Secretary of THREE RIVERS ESTATES, INC., a corporation under the laws of the State of New Jersey and licensed by the State of Florida, to me known to be the Individuals and Officers Described in and who executed the Forgoing Dedication, and Severally acknowledged the execution thereof to be their free act and deed as such Officers thereunto duly authorized and that the official Seal of said Corporation is duly affixed thereto and the said dedication is the act and deed of said Corporation.
Witness my hand and official Seal at Miami State of Florida this 15th Day of February 1964.

Notary Public, State of Florida
My Commission Expires
Ewald Kleinlein

"SEAL"

COUNTY ATTORNEY'S CERTIFICATE
I HEREBY CERTIFY that I have examined the foregoing plat and that it complies in form with the requirements of Chapter 177, Florida Statutes.

COUNTY ATTORNEY
DATE

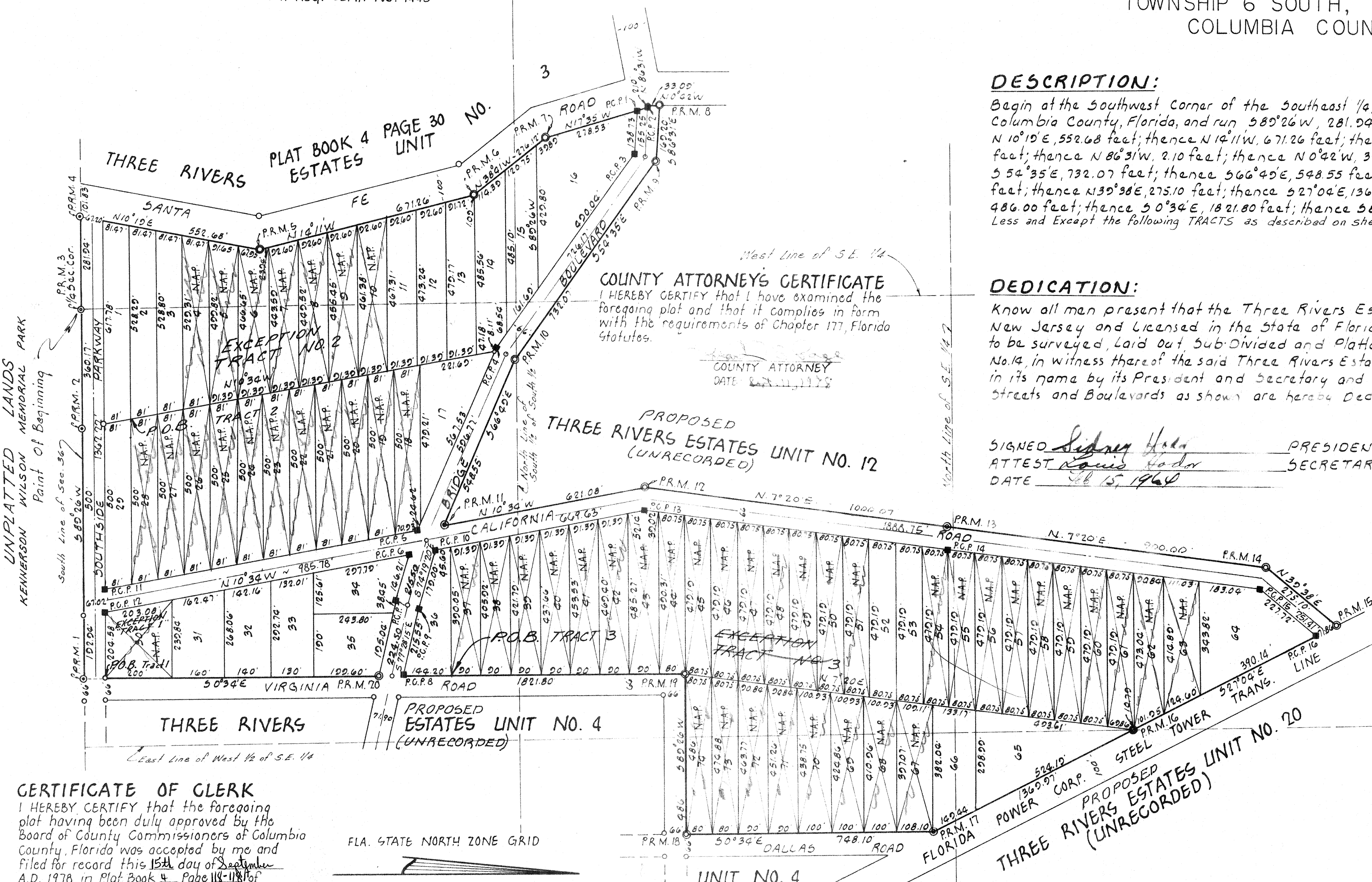
PROPOSED
THREE RIVERS ESTATES UNIT NO. 12
(UNRECORDED)

PROPOSED
ESTATES UNIT NO. 4
(UNRECORDED)

PROPOSED
THREE RIVERS ESTATES UNIT NO. 20
(UNRECORDED)

APPROVED BY COUNTY COMMISSION
COLUMBIA COUNTY, FLORIDA

DATE 9-13-78
SIGNED *Sandy P. Pappas* Chairman
ATTEST *Mary B. Chidie* clerk



CERTIFICATE OF CLERK
I HEREBY CERTIFY that the foregoing plat having been duly approved by the Board of County Commissioners of Columbia County, Florida was accepted by me and filed for record this 15th day of September A.D. 1978, in Plat Book 4 Page 118-119 of the public records of Columbia County, Florida.

Mary B. Chidie
CLERK OF CIRCUIT COURT
Columbia County, Florida

FLA. STATE NORTH ZONE GRID

- LEGEND**
- SCALE: 1-Inch = 200-Feet
 - ⊙ = P.R.M. (4"x4" C.M. WITH DISC)
 - = 4"x4"x16" Concrete Monuments
 - = Concrete Monuments Placed on all Lot Corners
 - P.C.P. (4"x4" C.M. WITH DISC)
 - All lot cofs. are 4"x4"x16" C.M.
 - N.A.P. = Not a Part