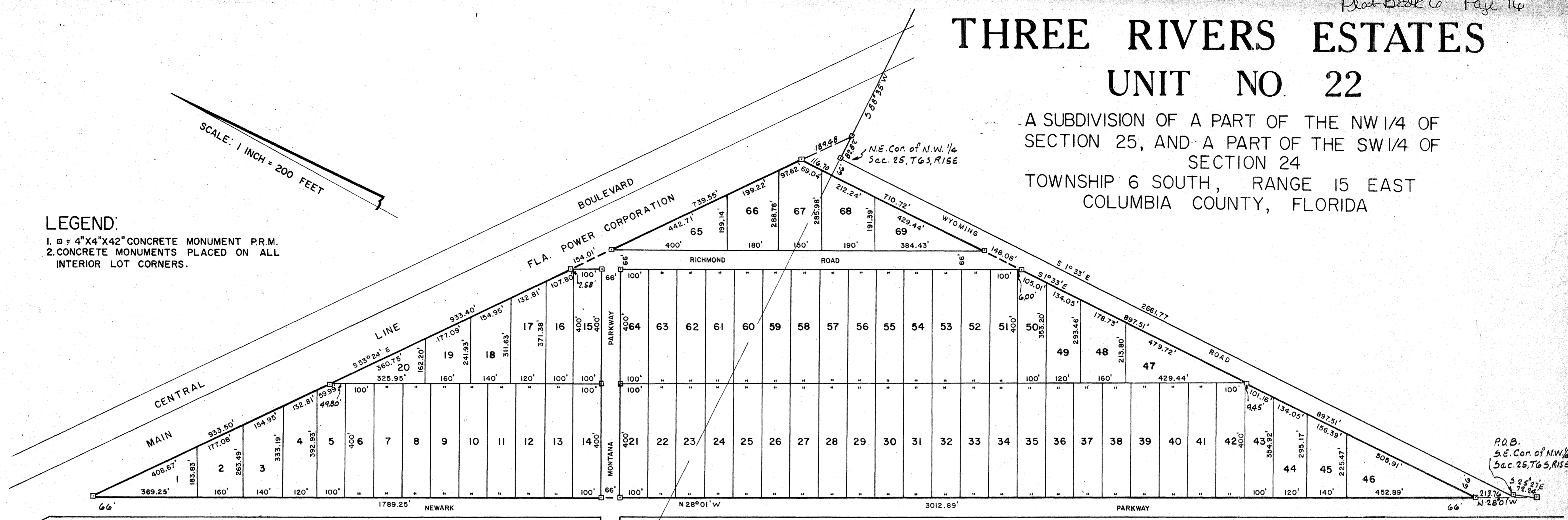


THREE RIVERS ESTATES UNIT NO. 22

A SUBDIVISION OF A PART OF THE NW 1/4 OF SECTION 25, AND A PART OF THE SW 1/4 OF SECTION 24 TOWNSHIP 6 SOUTH, RANGE 15 EAST COLUMBIA COUNTY, FLORIDA

SCALE: 1 INCH = 200 FEET

LEGEND:
1. \square = 4"X4"X42" CONCRETE MONUMENT P.R.M.
2. CONCRETE MONUMENTS PLACED ON ALL INTERIOR LOT CORNERS.



DESCRIPTION:

Begin at the Southeast Corner of the N.W. 1/4 of Section 25, Township 6 South, Range 15 East, Columbia County, Florida and run S 25° 27' E, 72.24 feet; thence N 28° 01' W, 5081.00 feet to a point on the Southwesterly Right of Way Line of Florida Power Corporation's Fort White to Silver Springs 230 KV Power Line; thence S 53° 24' E along said Southwesterly Right of Way 2950.06 feet to the North Line of Section 25; thence S 88° 35' W along said north line 82.82 feet to the Northeast Corner of the N.W. 1/4; thence S 1° 33' E along the East line of said N.W. 1/4 a distance of 2661.77 feet to the Point of Beginning.

DEDICATION:

Know all men present that the Three Rivers Estates Inc., Incorporated in the State of New Jersey and Licensed in the State of Florida, has caused the lands herein described to be surveyed laid out subdivided and Platted to be known as Three Rivers Estates, Unit No. 22 in witness thereof the said Three Rivers Estates Inc. has caused these present to be signed in its name by its President and Secretary and its Corporate Seal to be affixed and that the Streets and Boulevards as shown are hereby dedicated to the Public.

ACKNOWLEDGMENT:

STATE OF FLORIDA
COUNTY OF DADE
I hereby certify that on this 8th Day of February 1966 before me personally appeared Sidney Hodor and Louis Hodor respectively President and Secretary of Three Rivers Estates, Inc. a Corporation Under the laws of the State of New Jersey and licensed by the State of Florida to be known to be the Individuals and Officers described in and who executed the foregoing Dedication and severally acknowledged the execution thereof to be their free Act and Deed as such Officers thereunto duly authorized and that the official Seal of said Corporation is duly affixed thereto and the said Dedication is the Act and Deed of said Corporation.
Witness my hand and official seal at Miami State of Florida this 8th Day of February 1966

FILE NUMBER 89-12548
FILED AND RECORDED IN THE OFFICIAL RECORDS OF COLUMBIA COUNTY, FLORIDA
1966 FEB 8 11:26 AM
RECORD VERIFIED
P. DeWitt
CLERK OF COURTS
COLUMBIA COUNTY, FLORIDA
BY: J. Hutcherson

Notary Public State of Florida
My Commission Expires May 6 1968

Edith Weinstein
Seal

SURVEYORS CERTIFICATE:

I hereby certify that I am a duly authorized Land Surveyor and that a survey of the lands hereon described has been made under my supervision and subdivided as shown on this plat and that permanent concrete monuments have been placed on each Lot corner and P.R.M.'s as shown on plat.

Bennett R. Wattle
BENNETT R. WATTLE, LAND SURVEYOR
FLA. REG. CERT. No. 1443

RECORDED THIS _____ DAY OF OCTOBER, 1989
IN PLAT BOOK _____ PAGE _____
_____, CLERK OF COURT
COLUMBIA COUNTY, FLORIDA.

SIGNED Sidney Hodor PRESIDENT
ATTEST Louis Hodor SECRETARY
DATE February 8, 1966

APPROVED BY COUNTY COMMISSION
COLUMBIA COUNTY, FLORIDA, FOR RECORDING

DATE Oct 19, 1989
SIGNED Judith Shipley acting Chairman
ATTEST Tracy J. Chews Deputy Clerk

Seal

Seal

