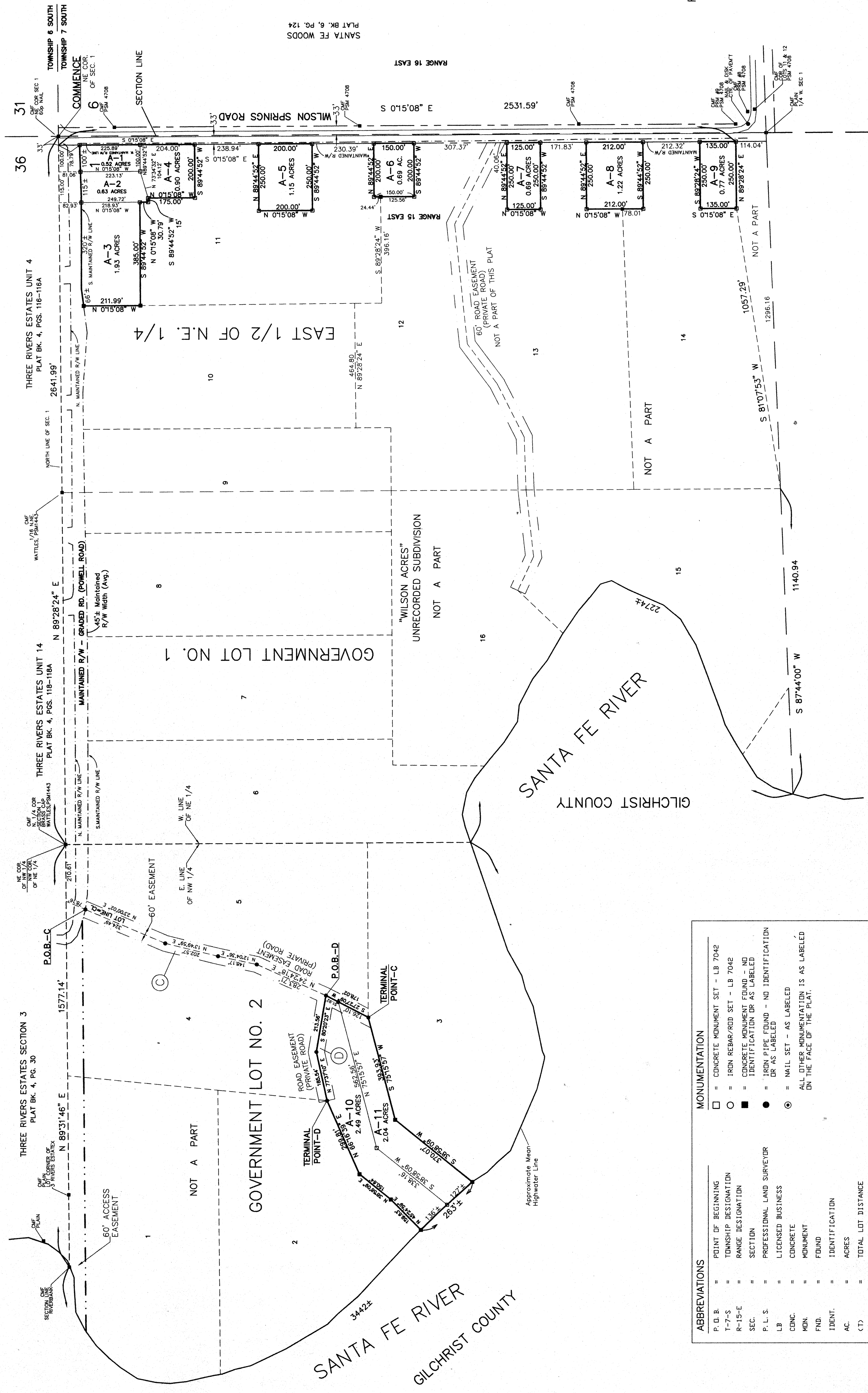


Wilson Springs Community Phase 3

AN UNRECORDED SUBDIVISION
IN SECTION 1, TOWNSHIP 7 SOUTH, RANGE 15 EAST
COLUMBIA COUNTY, FLORIDA

SEE SHEET 1 FOR
GENERAL NOTES & NOTICES



ABBREVIATIONS		MONUMENTATION	
P. D. B.	= POINT OF BEGINNING	□	= CONCRETE MONUMENT SET - LB 7042
T-7-S	= TOWNSHIP DESIGNATION	○	= IRON REBAR/ROD SET - LB 7042
R-15-E	= RANGE DESIGNATION	■	= CONCRETE MONUMENT FOUND - NO IDENTIFICATION OR AS LABELED
SEC.	= SECTION	●	= IRON PIPE FOUND - NO IDENTIFICATION OR AS LABELED
P. L. S.	= PROFESSIONAL LAND SURVEYOR	⊙	= MAIL SET - AS LABELED ON THE FACE OF THE PLAT.
LB	= LICENSED BUSINESS		
CDNC.	= CONCRETE		
MON.	= MONUMENT		
FND.	= FOUND		
IDENT.	= IDENTIFICATION		
AC.	= ACRES		
(T)	= TOTAL LOT DISTANCE		

NOTICE:
Neither the developer, land surveyor nor Columbia County, Florida represents that this Plat meet all the requirements of Chapters 71, 72, 73, 74, 75, 76, 77, 78, 79, 80, 81, 82, 83, 84, 85, 86, 87, 88, 89, 90, 91, 92, 93, 94, 95, 96, 97, 98, 99, 100, 101, 102, 103, 104, 105, 106, 107, 108, 109, 110, 111, 112, 113, 114, 115, 116, 117, 118, 119, 120, 121, 122, 123, 124, 125, 126, 127, 128, 129, 130, 131, 132, 133, 134, 135, 136, 137, 138, 139, 140, 141, 142, 143, 144, 145, 146, 147, 148, 149, 150, 151, 152, 153, 154, 155, 156, 157, 158, 159, 160, 161, 162, 163, 164, 165, 166, 167, 168, 169, 170, 171, 172, 173, 174, 175, 176, 177, 178, 179, 180, 181, 182, 183, 184, 185, 186, 187, 188, 189, 190, 191, 192, 193, 194, 195, 196, 197, 198, 199, 200, 201, 202, 203, 204, 205, 206, 207, 208, 209, 210, 211, 212, 213, 214, 215, 216, 217, 218, 219, 220, 221, 222, 223, 224, 225, 226, 227, 228, 229, 230, 231, 232, 233, 234, 235, 236, 237, 238, 239, 240, 241, 242, 243, 244, 245, 246, 247, 248, 249, 250, 251, 252, 253, 254, 255, 256, 257, 258, 259, 260, 261, 262, 263, 264, 265, 266, 267, 268, 269, 270, 271, 272, 273, 274, 275, 276, 277, 278, 279, 280, 281, 282, 283, 284, 285, 286, 287, 288, 289, 290, 291, 292, 293, 294, 295, 296, 297, 298, 299, 300, 301, 302, 303, 304, 305, 306, 307, 308, 309, 310, 311, 312, 313, 314, 315, 316, 317, 318, 319, 320, 321, 322, 323, 324, 325, 326, 327, 328, 329, 330, 331, 332, 333, 334, 335, 336, 337, 338, 339, 340, 341, 342, 343, 344, 345, 346, 347, 348, 349, 350, 351, 352, 353, 354, 355, 356, 357, 358, 359, 360, 361, 362, 363, 364, 365, 366, 367, 368, 369, 370, 371, 372, 373, 374, 375, 376, 377, 378, 379, 380, 381, 382, 383, 384, 385, 386, 387, 388, 389, 390, 391, 392, 393, 394, 395, 396, 397, 398, 399, 400, 401, 402, 403, 404, 405, 406, 407, 408, 409, 410, 411, 412, 413, 414, 415, 416, 417, 418, 419, 420, 421, 422, 423, 424, 425, 426, 427, 428, 429, 430, 431, 432, 433, 434, 435, 436, 437, 438, 439, 440, 441, 442, 443, 444, 445, 446, 447, 448, 449, 450, 451, 452, 453, 454, 455, 456, 457, 458, 459, 460, 461, 462, 463, 464, 465, 466, 467, 468, 469, 470, 471, 472, 473, 474, 475, 476, 477, 478, 479, 480, 481, 482, 483, 484, 485, 486, 487, 488, 489, 490, 491, 492, 493, 494, 495, 496, 497, 498, 499, 500, 501, 502, 503, 504, 505, 506, 507, 508, 509, 510, 511, 512, 513, 514, 515, 516, 517, 518, 519, 520, 521, 522, 523, 524, 525, 526, 527, 528, 529, 530, 531, 532, 533, 534, 535, 536, 537, 538, 539, 540, 541, 542, 543, 544, 545, 546, 547, 548, 549, 550, 551, 552, 553, 554, 555, 556, 557, 558, 559, 560, 561, 562, 563, 564, 565, 566, 567, 568, 569, 570, 571, 572, 573, 574, 575, 576, 577, 578, 579, 580, 581, 582, 583, 584, 585, 586, 587, 588, 589, 590, 591, 592, 593, 594, 595, 596, 597, 598, 599, 600, 601, 602, 603, 604, 605, 606, 607, 608, 609, 610, 611, 612, 613, 614, 615, 616, 617, 618, 619, 620, 621, 622, 623, 624, 625, 626, 627, 628, 629, 630, 631, 632, 633, 634, 635, 636, 637, 638, 639, 640, 641, 642, 643, 644, 645, 646, 647, 648, 649, 650, 651, 652, 653, 654, 655, 656, 657, 658, 659, 660, 661, 662, 663, 664, 665, 666, 667, 668, 669, 670, 671, 672, 673, 674, 675, 676, 677, 678, 679, 680, 681, 682, 683, 684, 685, 686, 687, 688, 689, 690, 691, 692, 693, 694, 695, 696, 697, 698, 699, 700, 701, 702, 703, 704, 705, 706, 707, 708, 709, 710, 711, 712, 713, 714, 715, 716, 717, 718, 719, 720, 721, 722, 723, 724, 725, 726, 727, 728, 729, 730, 731, 732, 733, 734, 735, 736, 737, 738, 739, 740, 741, 742, 743, 744, 745, 746, 747, 748, 749, 750, 751, 752, 753, 754, 755, 756, 757, 758, 759, 760, 761, 762, 763, 764, 765, 766, 767, 768, 769, 770, 771, 772, 773, 774, 775, 776, 777, 778, 779, 780, 781, 782, 783, 784, 785, 786, 787, 788, 789, 790, 791, 792, 793, 794, 795, 796, 797, 798, 799, 800, 801, 802, 803, 804, 805, 806, 807, 808, 809, 810, 811, 812, 813, 814, 815, 816, 817, 818, 819, 820, 821, 822, 823, 824, 825, 826, 827, 828, 829, 830, 831, 832, 833, 834, 835, 836, 837, 838, 839, 840, 841, 842, 843, 844, 845, 846, 847, 848, 849, 850, 851, 852, 853, 854, 855, 856, 857, 858, 859, 860, 861, 862, 863, 864, 865, 866, 867, 868, 869, 870, 871, 872, 873, 874, 875, 876, 877, 878, 879, 880, 881, 882, 883, 884, 885, 886, 887, 888, 889, 890, 891, 892, 893, 894, 895, 896, 897, 898, 899, 900, 901, 902, 903, 904, 905, 906, 907, 908, 909, 910, 911, 912, 913, 914, 915, 916, 917, 918, 919, 920, 921, 922, 923, 924, 925, 926, 927, 928, 929, 930, 931, 932, 933, 934, 935, 936, 937, 938, 939, 940, 941, 942, 943, 944, 945, 946, 947, 948, 949, 950, 951, 952, 953, 954, 955, 956, 957, 958, 959, 960, 961, 962, 963, 964, 965, 966, 967, 968, 969, 970, 971, 972, 973, 974, 975, 976, 977, 978, 979, 980, 981, 982, 983, 984, 985, 986, 987, 988, 989, 990, 991, 992, 993, 994, 995, 996, 997, 998, 999, 1000.

SEE SHEET 1
FOR GENERAL NOTES

Donald F. Lee and Associates, Inc.
SURVEYORS - ENGINEERS
140 Northwest Ridgewood Avenue, Lake City, Florida 32055
Phone: (386) 755-6166 FAX: (386) 755-6167
Certificate of Authorization # LB 7042

Wilson Springs Community Phase 3

AN UNRECORDED SUBDIVISION
IN SECTION 1, TOWNSHIP 7 SOUTH, RANGE 15 EAST
COLUMBIA COUNTY, FLORIDA

LOT DESCRIPTIONS

LOT A-1
COMMENCE at the Northeast corner of Section 1, Township 7 South, Range 15 East, Columbia County, Florida and run South 89°28'24" West along the North line of Section 1 a distance of 33.00 feet to a point on the Westerly Right-of-Way line of Wilson Springs Road; thence South 00°15'08" East along said Westerly Right-of-Way line of Wilson Springs Road a distance of 78.79 feet to the POINT OF BEGINNING; thence continue South 00°15'08" East still along said Westerly Right-of-Way line of Wilson Springs Road a distance of 225.89 feet; thence South 89°44'52" West a distance of 100.00 feet; thence North 00°15'08" West a distance of 223.13 feet to a point on the Southerly maintained Right-of-Way line of Powell Road (a graded road); thence Easterly along said Southerly maintained Right-of-Way line of Powell Road (a graded road) a distance of 100 feet, more or less to the POINT OF BEGINNING. Containing 0.52 acres, more or less.

LOT A-2
COMMENCE at the Northeast corner of Section 1, Township 7 South, Range 15 East, Columbia County, Florida and run South 89°28'24" West along the North line of Section 1 a distance of 133.00 feet; thence South 00°15'08" East a distance of 81.06 feet to the POINT OF BEGINNING; thence continue South 00°15'08" East a distance of 223.13 feet; thence South 73°34'32" West a distance of 104.12 feet; thence South 89°44'52" West a distance of 15.00 feet; thence North 00°15'08" West a distance of 249.72 feet to a point on the Southerly maintained Right-of-Way line of Powell Road (a graded road); thence Easterly along the Southerly maintained Right-of-Way line of Powell Road (a graded road) a distance of 115 feet, more or less, to the POINT OF BEGINNING. Containing 0.63 acres, more or less.

LOT A-3
COMMENCE at the Northeast corner of Section 1, Township 7 South, Range 15 East, Columbia County, Florida and run South 89°28'24" West along the North line of Section 1 a distance of 248.00 feet; thence South 00°15'08" East a distance of 82.93 feet to the POINT OF BEGINNING; thence continue South 00°15'08" East a distance of 218.93 feet; thence South 89°44'52" West a distance of 365.00 feet; thence North 00°15'08" West a distance of 211.99 feet to a point on the Southerly maintained Right-of-Way line of Powell Road (a graded road); thence Easterly along the Southerly maintained Right-of-Way line of Powell Road (a graded road) a distance of 386 feet, more or less, to the POINT OF BEGINNING. Containing 1.93 acres, more or less.

LOT A-4
COMMENCE at the Northeast corner of Section 1, Township 7 South, Range 15 East, Columbia County, Florida and run South 89°28'24" West along the North line of Section 1 a distance of 33.00 feet to a point on the Westerly Right-of-Way line of Wilson Springs Road; thence South 00°15'08" East along said Westerly Right-of-Way line of Wilson Springs Road a distance of 304.68 feet to the POINT OF BEGINNING; thence continue South 00°15'08" East still along said Westerly Right-of-Way line of Wilson Springs Road a distance of 204.00 feet; thence South 89°44'52" West a distance of 200.00 feet; thence North 00°15'08" West a distance of 175.00 feet; thence North 73°34'32" East a distance of 104.12 feet; thence North 89°44'52" East a distance of 100.00 feet to the POINT OF BEGINNING. Containing 0.90 acres, more or less.

LOT A-5
COMMENCE at the Northeast corner of Section 1, Township 7 South, Range 15 East, Columbia County, Florida and run South 89°28'24" West along the North line of Section 1 a distance of 33.00 feet to a point on the Westerly Right-of-Way line of Wilson Springs Road; thence South 00°15'08" East along said Westerly Right-of-Way line of Wilson Springs Road a distance of 747.62 feet to the POINT OF BEGINNING; thence continue South 00°15'08" East along said Westerly Right-of-Way line of Wilson Springs Road a distance of 200.00 feet; thence South 89°44'52" West a distance of 250.00 feet; thence North 00°15'08" West along a line parallel to the Westerly Right-of-Way line of Wilson Springs Road a distance of 200.00 feet; thence North 89°44'52" East a distance of 250.00 feet to the POINT OF BEGINNING. Containing 1.15 acres, more or less.

LOT A-6
COMMENCE at the Northeast corner of Section 1, Township 7 South, Range 15 East, Columbia County, Florida and run South 89°28'24" West along the North line of Section 1 a distance of 33.00 feet to a point on the Westerly Right-of-Way line of Wilson Springs Road; thence South 00°15'08" East along said Westerly Right-of-Way line of Wilson Springs Road a distance of 1178.01 feet to the POINT OF BEGINNING; thence continue South 00°15'08" East along said Westerly Right-of-Way line of Wilson Springs Road a distance of 150.00 feet; thence South 89°44'52" West a distance of 200.00 feet; thence North 00°15'08" West along a line parallel to the Westerly Right-of-Way line of Wilson Springs Road a distance of 150.00 feet; thence North 89°44'52" East a distance of 200.00 feet to the POINT OF BEGINNING. Containing 0.69 acres, more or less.

LOT A-7
COMMENCE at the Northeast corner of Section 1, Township 7 South, Range 15 East, Columbia County, Florida and run South 89°28'24" West along the North line of Section 1 a distance of 33.00 feet to a point on the Westerly Right-of-Way line of Wilson Springs Road; thence South 00°15'08" East along said Westerly Right-of-Way line of Wilson Springs Road a distance of 167.35 feet to the POINT OF BEGINNING; thence continue South 00°15'08" East along said Right-of-Way line of Wilson Springs Road a distance of 125.00 feet; thence South 89°44'52" West a distance of 250.00 feet; thence North 00°15'08" West along a line parallel to the Westerly Right-of-Way line of Wilson Springs Road a distance of 123.00 feet; thence North 89°44'52" East a distance of 250.00 feet to the POINT OF BEGINNING. Containing 0.69 acres, more or less.

LOT A-8
COMMENCE at the Northeast corner of Section 1, Township 7 South, Range 15 East, Columbia County, Florida and run South 89°28'24" West along the North line of Section 1 a distance of 33.00 feet to a point on the Westerly Right-of-Way line of Wilson Springs Road; thence South 00°15'08" East along said Westerly Right-of-Way line of Wilson Springs Road a distance of 197.27 feet to the POINT OF BEGINNING; thence continue South 00°15'08" East along said Westerly Right-of-Way line of Wilson Springs Road a distance of 212.00 feet; thence South 89°44'52" West a distance of 250.00 feet; thence North 00°15'08" West along a line parallel to the Westerly Right-of-Way line of Wilson Springs Road a distance of 122.00 feet; thence North 89°44'52" East a distance of 250.00 feet to the POINT OF BEGINNING. Containing 1.22 acres, more or less.

LOT A-9
COMMENCE at the Northeast corner of Section 1, Township 7 South, Range 15 East, Columbia County, Florida and run South 89°28'24" West along the North line of Section 1 a distance of 33.00 feet to a point on the Westerly Right-of-Way line of Wilson Springs Road; thence South 00°15'08" East along said Westerly Right-of-Way line of Wilson Springs Road; thence South 23°00'02" West along said North line of Section 1 a distance of 210.61 feet; thence South 89°31'46" West along said North line of Section 1 a distance of 402.65 feet; thence South 13°49'59" West a distance of 202.57 feet; thence South 12°04'36" West a distance of 148.17 feet; thence South 24°24'18" West a distance of 283.71 feet to the POINT OF BEGINNING; thence South 27°27'09" West a distance of 51.92 feet; thence South 75°15'57" West a distance of 562.56 feet; thence South 38°58'09" West a distance of 338.16 feet to a point on the approximate mean highwater line of the Santa Fe River; thence Northwesterly along the meander line of said approximate mean highwater line of the Santa Fe River a distance of 136 feet, more or less; thence North 45°24'59" East a distance of 159.63 feet; thence North 38°58'09" East a distance of 150.64 feet; thence North 66°16'39" East a distance of 299.81 feet; thence North 77°37'10" East a distance of 185.54 feet; thence South 80°20'23" East a distance of 213.56 feet to the POINT OF BEGINNING. Containing 2.49 acres, more or less.

LOT A-10
COMMENCE at the Northeast corner of Section 1, Township 7 South, Range 15 East, Columbia County, Florida and run South 89°28'24" West along the North line of Section 1 a distance of 2641.99 feet to the Northeast corner of the Northwest 1/4 of Section 1; thence South 89°31'46" West along said North line of Section 1 a distance of 210.61 feet; thence South 23°00'02" West a distance of 402.65 feet; thence South 13°49'59" West a distance of 202.57 feet; thence South 12°04'36" West a distance of 148.17 feet; thence South 24°24'18" West a distance of 283.71 feet to the POINT OF BEGINNING; thence South 27°27'09" West a distance of 51.92 feet; thence South 75°15'57" West a distance of 562.56 feet; thence South 38°58'09" West a distance of 338.16 feet to a point on the approximate mean highwater line of the Santa Fe River; thence Northwesterly along the meander line of said approximate mean highwater line of the Santa Fe River a distance of 136 feet, more or less; thence North 45°24'59" East a distance of 159.63 feet; thence North 38°58'09" East a distance of 150.64 feet; thence North 66°16'39" East a distance of 299.81 feet; thence North 77°37'10" East a distance of 185.54 feet; thence South 80°20'23" East a distance of 213.56 feet to the POINT OF BEGINNING. Containing 2.49 acres, more or less.

LOT A-11
COMMENCE at the Northeast corner of Section 1, Township 7 South, Range 15 East, Columbia County, Florida and run South 89°28'24" West along the North line of Section 1 a distance of 2641.99 feet to the Northeast corner of the Northwest 1/4 of Section 1; thence South 89°31'46" West along said North line of Section 1 a distance of 210.61 feet; thence South 23°00'02" West a distance of 402.65 feet; thence South 13°49'59" West a distance of 202.57 feet; thence South 12°04'36" West a distance of 148.17 feet; thence South 24°24'18" West a distance of 283.71 feet; thence South 27°27'09" West a distance of 51.92 feet; thence South 75°15'57" West a distance of 562.56 feet; thence South 38°58'09" West a distance of 338.16 feet to a point on the approximate mean highwater line of the Santa Fe River; thence Northwesterly along the meander line of said approximate mean highwater line of the Santa Fe River a distance of 136 feet, more or less; thence North 45°24'59" East a distance of 159.63 feet; thence North 38°58'09" East a distance of 150.64 feet; thence North 66°16'39" East a distance of 299.81 feet; thence North 77°37'10" East a distance of 185.54 feet; thence South 80°20'23" East a distance of 213.56 feet to the POINT OF BEGINNING. Containing 2.04 acres, more or less.

Easement C
An easement 60 feet in width, for ingress and egress purposes, lying 30 feet each side of and adjacent to the following described centerline:

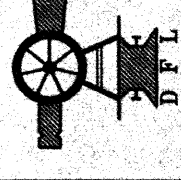
COMMENCE at the Northeast corner of Section 1, Township 7 South, Range 15 East, Columbia County, Florida and run South 89°28'24" West along the North line of said Section 1 a distance of 2641.99 feet to the Northeast corner of the Northwest 1/4 of Section 1; thence South 89°31'46" West along said North line of Section 1 a distance of 210.61 feet; thence South 23°00'02" West a distance of 402.65 feet; thence South 13°49'59" West a distance of 202.57 feet; thence South 12°04'36" West a distance of 148.17 feet; thence South 24°24'18" West a distance of 283.71 feet; thence South 27°27'09" West a distance of 178.02 feet to the TERMINAL POINT of herein described centerline and easement.

Easement D
An easement 60 feet in width, for ingress and egress purposes, lying 30 feet each side of and adjacent to the following described centerline:

COMMENCE at the Northeast corner of Section 1, Township 7 South, Range 15 East, Columbia County, Florida and run South 89°28'24" West along the North line of said Section 1 a distance of 2641.99 feet to the Northeast corner of the Northwest 1/4 of Section 1; thence South 89°31'46" West along said North line of Section 1 a distance of 210.61 feet; thence South 23°00'02" West a distance of 402.65 feet; thence South 13°49'59" West a distance of 202.57 feet; thence South 12°04'36" West a distance of 148.17 feet; thence South 24°24'18" West a distance of 283.71 feet to the POINT OF BEGINNING; thence North 80°20'23" West a distance of 213.56 feet; thence South 77°37'10" West a distance of 185.54 feet to TERMINAL POINT of herein described centerline and easement.

NOTICE:
Neither the developer, land surveyor nor Columbia County, Florida represents that this Plat meets all the requirements of Chapter 177, Florida Statutes, or the Columbia County Subdivision Regulations.

SEE SHEET 1
FOR GENERAL NOTES



SHEET 3 OF 3

Donald F. Lee and Associates, Inc.

SURVEYORS - ENGINEERS
140 Northwest Ridgewood Avenue, Lake City, Florida 32055
Phone: (386) 755-6166 FAX: (386) 755-6167
Certificate of Authorization # LB 7042